

**QUALIFICATION FILE – CONTACT DETAILS OF SUBMITTING BODY**

**Name and address of submitting body:**

**Construction Skill Development Council of India**

**Address:-** 204, Aashirwad Complex, D-1, Green Park, New Delhi - 110016

**Tel:** +91-11-46584466

**Name and contact details of individual dealing with the submission**

**Name:** Ms. Jancy Mathew

**Position in the organisation:** Head Standards and Research

**Address if different from above:**

*Same as above*

**Tel number(s):** +91-11-46584466

**E-mail address:** standards@csdcindia.org

**List of documents submitted in support of the Qualifications File**

1. Career Map of Surveying Occupation - Annexure 1
2. QP CON/Q0901- Annexure 2
3. RPL Assessment Guideline/Policy-Annexure 3
4. Detail Assessment Plan- Annexure 4
5. Workshop Interaction – Annexure 5

## QUALIFICATION FILE SUMMARY

<b>Qualification Title</b>	Assistant Surveyor - QP CON/Q0901										
<b>Body/bodies which will assess candidates</b>	<ul style="list-style-type: none"> <li>• MCG</li> <li>• Star Projects</li> <li>• Stamp</li> <li>• India Skills</li> </ul>										
<b>Body/bodies which will award the certificate for the qualification.</b>	CSDCI										
<b>Body which will accredit providers to offer the qualification.</b>	CSDCI										
<b>Occupation(s) to which the qualification gives access</b>	Surveying										
<b>Proposed level of the qualification in the NSQF.</b>	2										
<b>Anticipated volume of training/learning required to complete the qualification.</b>	350 hrs										
<b>Entry requirements / recommendations.</b>	Preferably 5th standard										
<b>Progression from the qualification.</b>	Surveyor L-6										
<b>Planned arrangements for RPL.</b>	Work is under progress										
<b>International Comparability</b>	Comparable with UK Standard										
<table border="1" style="width: 100%; border-collapse: collapse;"> <thead> <tr> <th style="width: 50%;"><b>INDIAN NOS</b></th> <th style="width: 50%;"><b>Comparable UK /Australian NOS</b></th> </tr> </thead> <tbody> <tr> <td>CON/N0901: Identify, select, use and store appropriate tools and instruments as per instructions</td> <td>Comparable UK NOS COSCP003: Contribute to preparations for engineering surveying operations</td> </tr> <tr> <td>CON/N0902: Provide support in various surveying works</td> <td>No Reference standard available for this level</td> </tr> <tr> <td>CON/N9001: Work according to personal health, safety and environment protocol at construction site</td> <td>Comparable UK NOS: COSVR641: Conform to general workplace health, safety and welfare</td> </tr> </tbody> </table>				<b>INDIAN NOS</b>	<b>Comparable UK /Australian NOS</b>	CON/N0901: Identify, select, use and store appropriate tools and instruments as per instructions	Comparable UK NOS COSCP003: Contribute to preparations for engineering surveying operations	CON/N0902: Provide support in various surveying works	No Reference standard available for this level	CON/N9001: Work according to personal health, safety and environment protocol at construction site	Comparable UK NOS: COSVR641: Conform to general workplace health, safety and welfare
<b>INDIAN NOS</b>	<b>Comparable UK /Australian NOS</b>										
CON/N0901: Identify, select, use and store appropriate tools and instruments as per instructions	Comparable UK NOS COSCP003: Contribute to preparations for engineering surveying operations										
CON/N0902: Provide support in various surveying works	No Reference standard available for this level										
CON/N9001: Work according to personal health, safety and environment protocol at construction site	Comparable UK NOS: COSVR641: Conform to general workplace health, safety and welfare										
<b>Formal structure of the qualification</b>											
<b>Title of unit or other component</b> (include any identification code used)	<b>Mandatory/ Optional</b>	<b>Estimated size (learning hours)</b>	<b>Level</b>								
CON/N0901: Identify, select, use and store appropriate tools and instruments as per instructions	Mandatory	100	2								
CON/N0902: Provide support in various surveying works	Mandatory	200	2								
CON/N9001: Work according to personal health, safety and environment protocol at construction site	Mandatory	50	2								

Please attach any document giving further detail about the structure of the qualification – eg a Curriculum or Qualification Pack.

Give details of the document here:

1. QP CON/Q0901- Annexure 2

## SECTION 1

### ASSESSMENT

**Name of assessment body:**

If there will be more than one assessment body for this qualification, give details.

- MCG
- Star Projects
- Stamp
- India Skills

**Will the assessment body be responsible for RPL assessment?**

Give details of how RPL assessment for the qualification will be carried out and quality assured.

The RPL assessment will be carried out through screening, identifying the skills gaps, provide bridge training to cover the competency gap and then conduct final assessment of the candidates.

Detailed note is attached as Annexure-3

**Describe the overall assessment strategy and specific arrangements which have been put in place to ensure that assessment is always valid, consistent and fair and show that these are in line with the requirements of the NSQF:**

Assessment is carried out through CSDCI affiliated Assessment Body only. The Assessors are trained & certified by CSDCI through Training of Assessors program. The TOA assessment programme involves two processes. The first process is gathering the evidence of the domain competency of individuals based on domain skills assessments. The second part of the assessment process is the judgement of his platform skills.

The assessment plan contains the following information:

- What will be assessed, i.e. the competency based on each NOS
- methods of assessments and its duration –skill & knowledge assessments context of the assessment (workplace/simulation)
- The criteria for decision making will guide judgements.
- To ensure assessment is always consistent and fair, a standard assessment criteria developed by CSDCI will be shared with affiliated AB's. The assessment tools developed by AB's within this assessment criteria framework duly vetted by CSDCI will be used for skill and knowledge assessments of trainees

Detailed Note is Attached as Annexure-4

Please attach any documents giving further information about assessment and/or RPL.

Give details of the document(s) here:

1. RPL Assessment Guidelines/Policy- Annexure 3
2. Detailed Assessment Plan- Annexure 4

## ASSESSMENT EVIDENCE

Complete the following grid for each grouping of NOS, assessment unit or other component as per the assessment criteria. Insert the required number of rows.

### CRITERIA FOR ASSESSMENT OF TRAINEES

#### Assistant Surveyor

#### CON/Q0901

#### Construction Skill Development Council Of India

##### Guidelines for Assessment

1. Criteria for assessment for each Qualification Pack will be created by the Sector Skill Council. Each Performance Criteria (PC) will be assigned marks proportional to its importance in NOS. SSC will also lay down proportion of marks for Theory and Skills Practical for each PC.
2. The assessment for the knowledge part will be based on knowledge bank of questions created by Assessment Bodies subject to approval by SSC
3. Individual assessment agencies will create unique question papers for knowledge/theory part for assessment of candidates as per assessment criteria given below
4. Individual assessment agencies will create unique evaluations for skill practical for every student at each examination/training center based on assessment criteria.
5. The passing percentage for each QP will be 50%. To pass the Qualification Pack, every trainee should score a minimum of 50% individually in each NOS.
6. The Assessor shall check the final outcome of the practices while evaluating the steps performed to achieve the final outcome.
7. The trainee shall be provided with a chance to repeat the test to correct his procedures in case of improper performance, with a deduction of marks for each iteration.
8. After the certain number of iteration as decided by SSC the trainee is marked as fail, scoring zero marks for the procedure for the practical activity .
9. In case of successfully passing only certain number of NOS's, the trainee is eligible to take subsequent assessment on the balance NOS's to pass the Qualification Pack within the specified timeframe set by SSC.
10. Minimum duration of Assessment of each QP shall be of 4hrs/trainee.

		Marks Allocation			
Assessable Outcome	Assessment criteria	Total Marks	Out Of	Theory	Practical Skills
<b>CON/N0901:</b> <b>Identify, select, use and store appropriate</b>	PC1. identify and handle type of chain based upon its lengths	<b>100</b>	10	1	9
	PC2. identify different types of tapes on basis of material, marked units, total length		10	1	9
	PC3. identify & differentiate between different types of offsets and handle them accordingly		10	1	9

<b>tools and instruments as per instructions</b>	PC4. identify different types of levels such as dumpy level, auto level, tilting level etc		10	1	9
	PC5. identify different types of angle measuring instruments like tachometer, theodolite etc		10	1	9
	PC6. identify different angle and distance measuring instruments like digital theodolite, total station etc		10	1	9
	PC7. identify and handle other tools used in surveying like levelling staff, arrows, pegs etc		10	1	9
	PC8. identify other miscellaneous instruments used in various surveys like GPS, instruments of photogrammetry, different types of transits etc		10	1	9
	PC9. store and stack the surveying tools and instruments, as per standard practices, manufactures guidelines		10	1	9
	PC10. handle, stack and store different surveying materials such as lime, strings, hurdles, paints etc. according to standard practices or instruction		10	1	9
		<b>Total</b>	<b>100</b>	<b>10</b>	<b>90</b>
<b>CON/N0902: Provide support in various surveying works</b>	PC1. Identify the tools and instruments to be used for surveying as per the instruction of surveyor	<b>100</b>	10	1	9
	PC2. count and collect the required numbers of tools as per the instructions of the surveyor				
	PC3. shift materials, tools and equipments to the instructed location as per the instruction of the surveyor		10	1	9
	PC4. follow the ergonomic principals while lifting, shifting and using the surveying tools and equipment's				
	PC5. place the tripod approximately on the station mark and fix the instrument to the same		5	0.5	4.5
	PC6. report to seniors in case of any ambiguity or deviations		5	0.5	4.5
	PC7. unfold the chain or tape as per standard practices		5	0.5	4.5
	PC8. fix the ranging rod at the indicated point to mark the start point as per instruction		5	0.5	4.5
	PC9. start the measurements from the exact point as per instructions		5	0.5	4.5
	PC10. interpret correctly and follow the hand signals shown by surveyor for ranging		5	0.5	4.5
	PC11. fix arrows at every chain length for reference off the follower		5	0.5	4.5
	PC12. collect and count all tools and instruments after completion of survey		5	0.5	4.5
	PC13. shift the tools back to the store and stack the same as per standard practice				
	PC14. select the staff based on the type of instrument being used				
	PC15. locate and confirm the staff point as instructed by the surveyor		15	1.5	13.5
	PC16. place the staff at exact instructed point				
	PC17. place the staff vertical or normal to the surface of base as per instruction				
	PC18. mark the points instructed by surveyor by suitable means		5	0.5	4.5
	PC19. install hurdles/profiles at instructed location		5	0.5	4.5
	PC20. fix the profiles maintaining their top at approximately same level		5	0.5	4.5
	PC21. install nails to mark the location of setting out points as per instructions		5	0.5	4.5

	PC22. mark symbols using appropriate paints to denote the identification of point				
	PC23. connect line thread /strings to respective nails on profile for marking appropriate points		5	0.5	4.5
	PC24. mark layouts for excavations using lime post setting out works				
		<b>Total</b>	<b>100</b>	<b>10</b>	<b>90</b>
<b>CON/N9001: Work according to personal health, safety and environment protocol at construction site</b>	PC1. identify and report any hazards, risks or breaches in site safety to the appropriate authorities		10	1	9
	PC2. follow emergency and evacuation procedures in case of accidents, fires, natural calamities				
	PC3. follow recommended safe practices in handling construction materials, including chemical and hazardous material whenever applicable		10	1	9
	PC4. participate in safety awareness programs like Tool Box Talks, safety demonstrations, mock drills, conducted at site		5	0.5	4.5
	PC5. identify near miss , unsafe condition and unsafe act		5	0.5	4.5
	PC6. use appropriate Personal Protective Equipment (PPE) as per work requirements including: <ul style="list-style-type: none"> <li>• Head Protection (Helmets)</li> <li>• Ear protection</li> <li>• Fall Protection</li> <li>• Foot Protection</li> <li>• Face and Eye Protection</li> <li>• Hand and Body Protection</li> <li>• Respiratory Protection (if required)</li> </ul>	<b>100</b>	10	1	9
	PC7. handle all required tools, tackles , materials & equipment safely		10	1	9
	PC8. follow safe disposal of waste, harmful and hazardous materials as per EHS guidelines		10	1	9
	PC9. install and apply properly all safety equipment as instructed		10	1	9
	PC10. follow safety protocol and practices as laid down by site EHS department		10	1	9
	PC11. collect and deposit construction waste into identified containers before disposal, separate containers that may be needed for disposal of toxic or hazardous wastes		10	1	9
	PC12. apply ergonomic principles wherever required		10	1	9
			<b>Total</b>	<b>100</b>	<b>10</b>

## EVIDENCE OF NEED

### **What evidence is there that the qualification is needed?**

Please refer to the attached list of job roles and occupations identified in construction sector. These job roles have been derived through extensive industry interactions facilitated from 10 workshops and various site visits conducted and interaction with 500+ representatives from different construction sector organizations all over the country.

Attached as Annexure 5

### **What is the estimated uptake of this qualification and what is the basis of this estimate?**

As per survey the incremental Manpower Gap between 2008 and 2022 found out to be 47000 under Surveying Occupation The estimated uptake for the qualification is thus around 47000

### **What steps were taken to ensure that the qualification(s) does/do not duplicate already existing or planned qualifications in the NSQF?**

QPs for Job Roles of various related SSC's were studied to ensure that there is no duplicity.

### **What arrangements are in place to monitor and review the qualification(s)? What data will be used and at what point will the qualification(s) be revised or updated?**

Standards department of CSDCI will do periodic review and monitor the industry feedbacks, Training Partners feedback on the qualification and will incorporate them appropriately at the designated revision time.

The revision of this qualification is scheduled after 1 years i.e. 23/08/2017

Please attach any documents giving further information about any of the topics above.

Give details of the document(s) here:

1. List of job roles
2. Workshop interactions- Annexure 5

## SECTION 3

### SUMMARY EVIDENCE OF LEVEL

Summary of Direct Evidence:

Justify the NSQF level allocated to the QP by building upon the five descriptors of NSQF. Explain the reasons for allocating the level to the QP.

Generic NOS is/are linked to the overall authority attached to the job role.

**Assistant Surveyor QP CON/Q0901**

Process required	Professional Knowledge	Professional Skills	Core Skills	Responsibility	Level
The job holder at this level is expected to perform repetitive activities such as identifying various tools and instruments, assisting in measurement of liner distances by holding chain or tape, holding the staff at instructed locations etc. on regular basis. The above mentioned activities require little application of understanding as these are practice based works which are repeated many times.	The job holder at this level is expected to know and identify various tools and instruments such as different types of tapes, offsets, angle and bearing measuring instruments, measuring staff and materials such as lime, string, hurdles etc. used in surveying works, they are require to apply a limited set of tools, materials and instruments such as tapes, chains, ranging rods, offsets, measuring rods, hurdles etc.	The job holder is expected to provide support to trade seniors by assisting them in required surveying works such as holding measuring staff at indicated points, holding measuring tape and chains at instructed locations, to fix the strings and hurdles as per requirement, identify and handle various tools and tackles, storing and stacking of survey instruments and tools etc. The above functions require limited use of tools, equipments and materials for performing specific task	The job holder applies basic knowledge of reading, writing to comprehend instructions orally and effectively and relay them as per requirements through both written and oral means.  The job holder adheres to environmental and safety guidelines and carries out proper housekeeping, storing and stacking practices while performing various tasks.	The Job holder is not directly responsible for the outcomes of the works as the works are carried out under instruction and close supervision of trade senior.	2
<b>Level 2</b>	<b>Level 2</b>	<b>Level 2</b>	<b>Level 2</b>	<b>Level 2</b>	

**OTHER EVIDENCE OF LEVEL** [This need only be filled in where evidence other than primary outcomes was used to allocate a level] **(Optional)**

Summary of other evidence (if used): **Not applicable.**

## SECTION 4



## EVIDENCE OF RECOGNITION OR PROGRESSION

**What steps have been taken in the design of this or other qualifications to ensure that there is a clear path to other qualifications in this sector?**

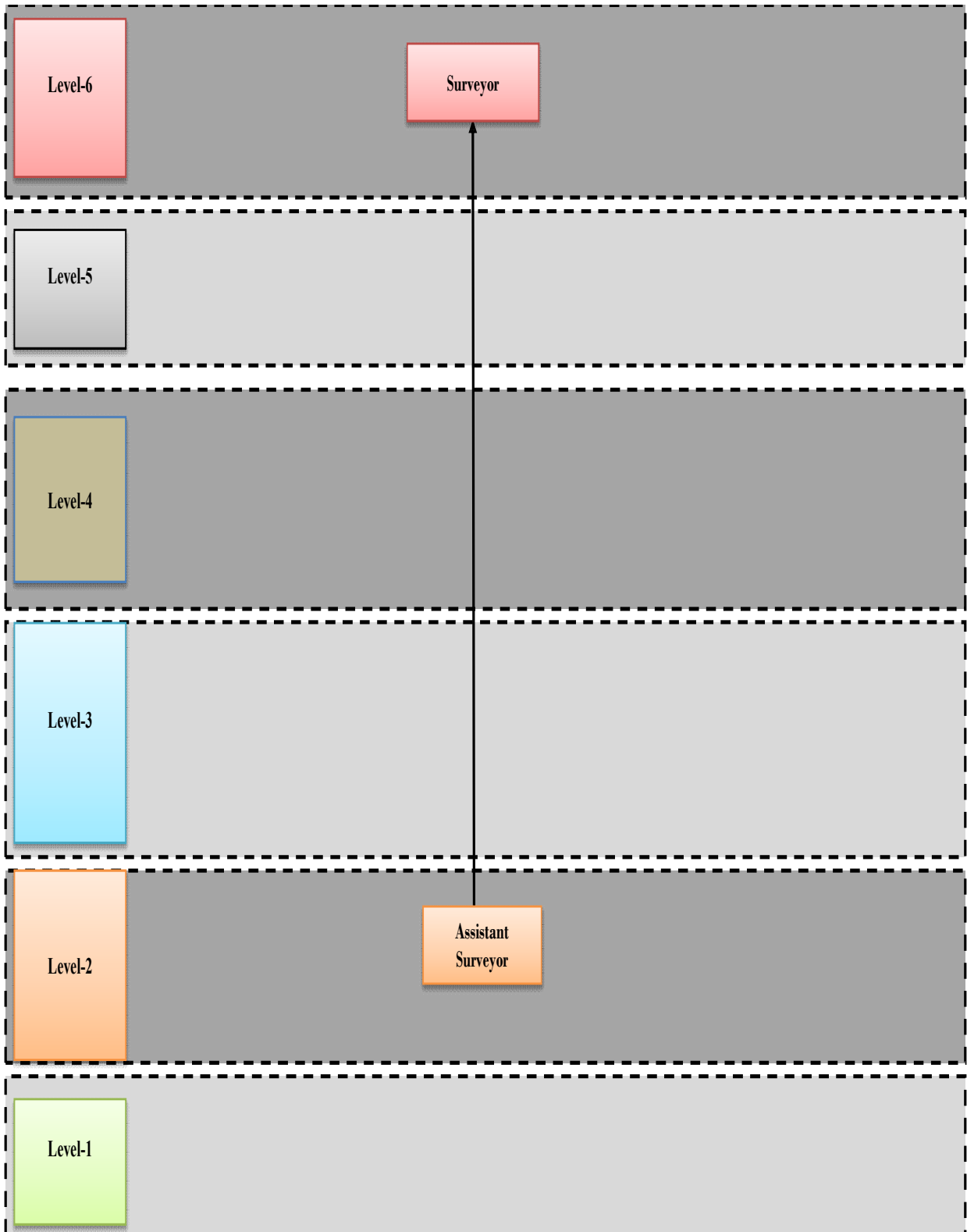
Please refer to attached career path as per annexure 1 which clearly define the clear career path.

Please attach any documents giving further information about any of the topics above.

Give details of the document(s) here:

1. Annexure 1
  - Overall Career map
  - Career map of Surveying Occupation
2. QP CON/Q0901- Annexure 2

## Career Map



## Annexure 3: RPL Assessment Guideline/Policy

### 1 Guidelines and Implementation Strategy

Under RPL, the candidate can be certified in two ways:

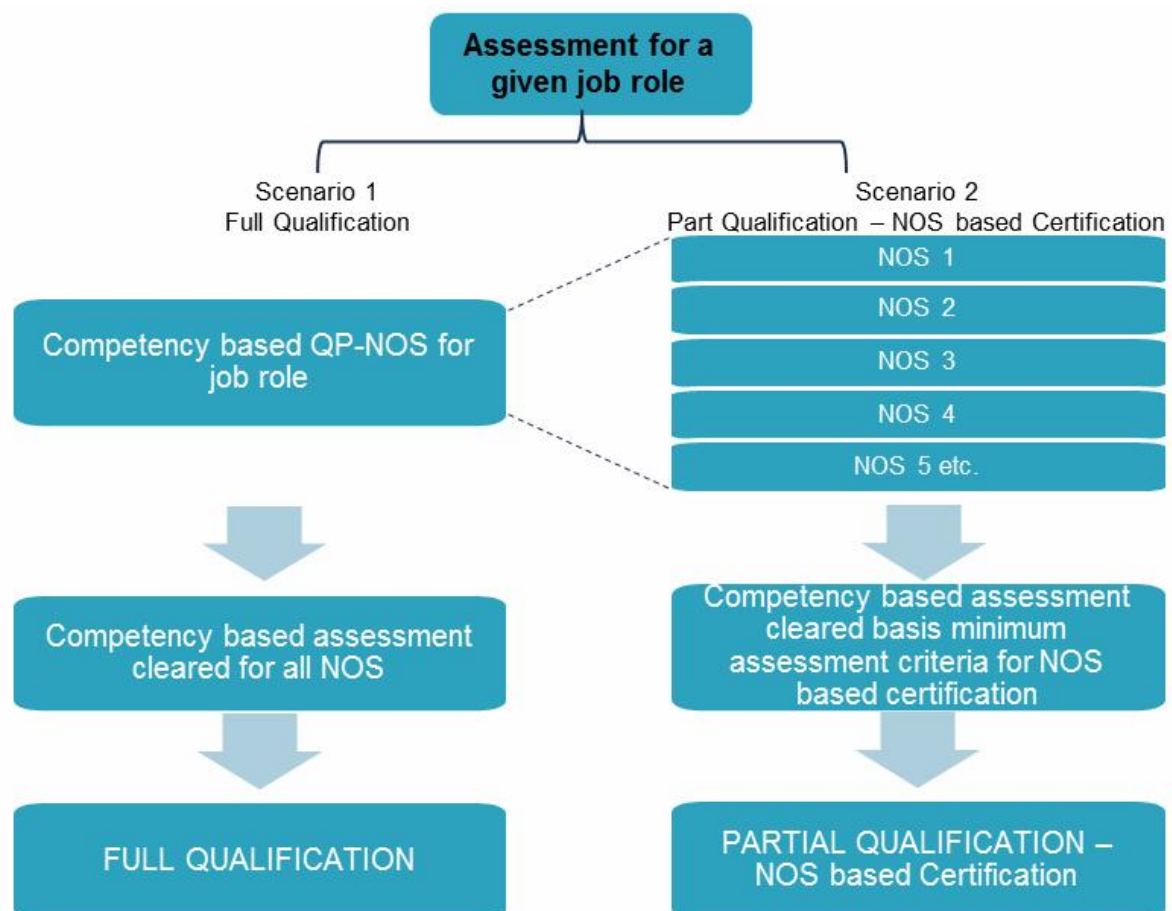
#### 1.1 **Full Qualification**

In this scenario, a candidate enrolled under RPL is assessed as per the assessment criteria of the QP-NOS of the selected job role. If the candidate clears competency based assessment under the designated Job Role, candidate is awarded a “Full Qualification” Certificate.

#### 1.2 **Partial Qualification –**

NOS Based Certification Under this scenario, a candidate enrolled under RPL is assessed as per the same QP-NOS. The SSCs have to define the minimum assessment criteria that the trainee has to attain for the QP-NOS in order to get NOS based certificate.

#### 1.3 **A pictorial representation of the process is below:**



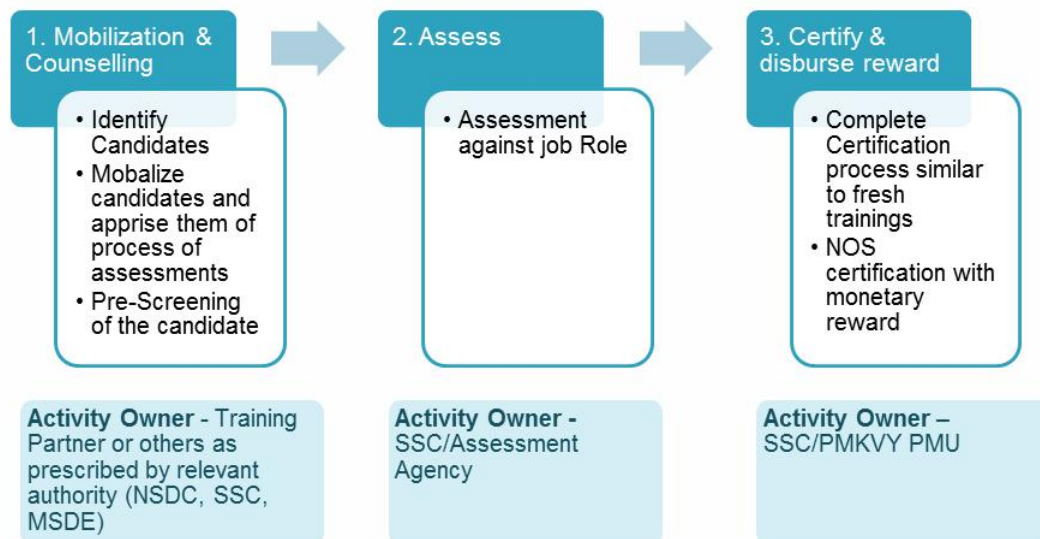
## 2 Detailed Strategy

2.1 RPL is a three step process

2.1.1 Mobilization & Counselling

2.1.2 Assessment

2.1.3 Certification & Reward Disbursement



### **3 Mobilization & Counselling**

- 3.1 The Training Partner (TP) or any other authority as prescribed by the Steering Committee will identify and counsel candidates eligible for RPL through mobilization camps & advertisements etc. The mobilized candidates can **be counselled, oriented about the standardized NSQF framework and basis their existing competency will be mapped against the suitable level of the concerned Job role for assessments.**
- 3.2 Candidates may be mobilized with the help of SSC's Industry (clusters) connect, associations and MSME connect. These will be in the form of Kaushal Melas, Registration camps in clusters and active marketing through local media such as Radio, Newspapers and hoardings.
- 3.3 TPs will also be required to provide orientation training to candidates covering the following aspects. This training will form as a part of pre-screening and bridge orientation of a candidate:
  - 3.3.1 What is PMKVY/NON PMKVY?
  - 3.3.2 Information about the Skill Mission and NSQF
  - 3.3.3 Benefits and process of PMKVY/NON PMKVY to the candidate
  - 3.3.4 Who/what is NSDC and a SSC?
  - 3.3.5 What is RPL and the need for it
  - 3.3.6 What is a QP?
  - 3.3.7 What is NOS?
  - 3.3.8 Orientation on Assessment Criteria
  - 3.3.9 What is the process of assessment and run through mock assessment questions
  - 3.3.10 Who is a Training Partner?

### **4 Pre-screening of candidates**

- 4.1 Pre-screening guidance, counseling and support will be provided to the candidates by the TP. SSCs will be required to establish a pre-screening criteria for their sector and make it available online. The Training Partners will be mandated to pre-screen the candidate basis of these criteria before the candidate undergoes assessment.

### **5 Assessment**

- 5.1 The candidates enrolled will be assessed by the Assessment Agency affiliated with the Sector Skill Council on the basis of assessment criteria decided by Sector Skill Council (SSC). The candidate will need to pass in the minimum assessment criteria of a particular QP decided by the SSC.
- 5.2 Assessment is very critical for the success of whole RPL process. There are possibly three ways through which a candidate can undergo the assessment process:
  - 5.2.1 Stand-alone assessment- Candidate approaches the assessment center on her/his own and gets her/himself assessed
  - 5.2.2 Worksite assessment- Assessment of the existing employees is carried out at the workshop/yard

- 5.2.3 Assessment at Training Centre- Assessment is carried out at the Training Centre.
- 5.3 Typically, SSC are required to give instructions to assess the candidates more through Practical Knowledge and demonstration e.g.
- 5.4 The assessment could include a theory and practical component with varying weightages respectively. This will be the prerogative of the SSC basis the sector and participating QP.
- 5.4.1 Theory assessment will be a Multiple Choice Question paper consisting of at least 20 questions.
- 5.4.2 Practical assessment will include the assessee actually demonstrating skills on the basis of the QP as required in the job role.
- 5.5 The guidelines for the assessor to conduct the assessments are:**
- 5.5.1 Assessments have to be conducted in local languages wherever possible.
- 5.5.2 The assessment should be carried out in accordance with the assessment criteria.
- 5.5.3 Language, communication and expression used in assessment should be understandable and appropriate, to the candidate.
- 5.5.4 Questions based on practical assessment of the skills should be simple, direct and comprehensible.
- 5.5.5 In order to assess the proficiency of the subject knowledge, the candidate will take test developed by Assessment Agency keeping in view the literacy level of the candidate.
- 5.5.6 While assessing, the assessment agency will also review the evidence submitted by the candidate i.e. confirm the identity of the candidate, physical verification of the documentation provided.

## **6 Certification & Reward Disbursement**

- 6.1 Successfully assessed candidates with a valid Aadhaar or alternate ID (as per process) will be eligible for either “Full Qualification” or “Partial Qualification – NOS based Certification” as described above under Overall Approach of RPL. The reward in both cases will be the same (as per Sector, QP and NSQF Level)
- 6.2 Certified candidates with valid bank details will be processed for reward money by NSDC.

## **Annexure 4: Detailed Assessment Plan**

### **ASSESSMENT OF TRAINEES: PROCESS & PROCEDURE TO BE ADOPTED**

The assessment has to comprise of two components, namely:

1. Knowledge assessment (theory/viva assessment)
2. Skill assessment (practical/hands-on skill assessment)

### **MODE OF ASSESSMENT**

1. Demonstration/Practical for Performance /Skill Assessment
  2. Synoptic multiple choice question test.
  3. Viva
- } For Knowledge Assessment

### **COMPONENTS OF ASSESSMENT:**

#### **1. Performance/Skill Assessments**

The performance/skill assessment will be conducted through demonstration/practical

#### **Demonstration /Practical Assessment**

There will be practical task for core NOS's which the trainee must attempt and demonstrate the occupational skills acquired to pass. Also the practical skill for generic NOS would be judged while carrying out practical task for core NOSs. Practical assessment is externally set and externally marked.

Trainees must attempt and pass the practical test which is assessed through a given task. The basis for practical task is the performance criteria provide in the NOS of the Qualification Pack.

The assessment will be conducted in a simulated working environment. Due to this fact, the assessors must note that the naturally occurring evidence of competence is unavailable or infrequent. Simulation must be undertaken in a Realistic Working Environment which provides an environment that replicates the key characteristics of the workplace in which the skill to be assessed is normally employed.

Scheduling of the practical task assessments is flexible but to retain integrity of the assessment, they should be carried out as closely as possible to the written assessments.

#### **Introducing the practical assessment to trainees**

It will be beneficial to take trainees through what is required in the practical assessments and the way in which each part will be graded. Trainees should have an opportunity to familiarise themselves with the way the tasks are graded.

Trainees may refer to their faculty for guidance on parts of the practical assignments only, though they should be aware that, especially for the practical assessments, the amount of guidance and support they are given may be reflected in the feedback and performance.

## **2. Knowledge Assessment**

The knowledge assessments are conducted through written test and viva.

### **2.1. Synoptic multiple choice question (MCQ) test**

Synoptic test is an MCQ (Multiple Choice Question) test to assess the underpinning knowledge. The synoptic MCQ tests are externally set and externally marked. This test is to be taken by the trainee after completion of all the units under controlled and invigilated conditions as closed-book test under the supervision of an assessor. Trainees can only achieve whole marks; half marks for partially answered questions are not permitted. Selection of two or more options will be marked as wrong. The answers should be marked by pen only.

The test may be conducted by the assessor in the oral mode, if required, considering the lack of reading and comprehending acumen (skills) of trainees. In such cases, the assessor will mention it on top of the MCQ submitted.

### **2.1. Viva**

Trainees are required to take the viva test **along with** their practical observation test which is an extended part of the practical observation and assessment. The viva assessments are externally set and externally marked.

## **ASSESSMENT LOCATION**

Assessment location can be one or a combination of following. Prior arrangements are to be ensured by the assessment agency in conjunction with all stakeholders

1. Training providers premise
2. Workshops, Labs
3. On-site assessment

## **ASSESSMENT CONTEXT:**

Assessment of trainees will be conducted at the end of the training. The assessing body is to liaise with the training provider and schedule assessments accordingly.

For assessments to be fair, the assessment bodies are to ensure that the assessment process is valid, reliable, flexible and fair. Assessments are to be planned in conjunction with the training timelines and periodicity, as defined for specific trainings based on National Occupational Standards (NOS).

## **CRITERIA FOR DECISION**

Assessments for the various job roles are conducted to gauge and assess the trainees' competencies and professional expertise as well as their skill and knowledge in the specified areas.



During the practical task, trainees will be assessed on their workmanship, quality of finished product, time management, etc., based on the performance criteria (PC), knowledge and understanding and their professional and soft skills as specified in the qualification pack. They will be graded for all their assessments based on the approved assessment strategy which is signed off by CSDCI.

Assessors must ensure that assessment decisions involve collection and evaluation of sufficient evidence to enable a judgment to be made on the student's competence. An assessment should not place unnecessary demands on students which may prevent them from demonstrating competence

### **KEY COMPONENTS OF THE ASSESSMENT PROCESS**

**1. Competence:** Individuals are considered competent when they are able to consistently apply their knowledge and skills to the standard of performance required in the workplace. Both workplace and off the job training and assessment shall aim to ensure that individuals participating in the training have the competence to undertake their work role to the standard expected in a range of employment situations.

**2. Competency based Assessment:** It is the process of collecting evidence and making judgments on whether competence has been achieved. This confirms that an individual can perform to the standard expected in the workplace as expressed in the National Occupational Standards.

**3. Collection of Evidence:** Evidence collected may be direct, such as observation of workplace performance/hands on exercises or indirect, such as formal testing.

**4. Evidence of Assessment:** Standard assessment criteria sheet filled by each AB along with photographic/videography/documentary evidences are submitted to CSDCI

**5. Judging Competence:** An individual is considered competent after he/she has successfully completed an assessment covered under assessment criteria is achieved with the specified passing score.

**6. Methodology of Assessment:** Assessment may involve a variety of assessment methods. Can vary from assessor to assessor. However, the process is to broadly comprise of Knowledge & Skill assessments, with the later involving practicals/hands on work assessment.

**7. Standards against which the students are to be assessed:** National Occupational Standards pertaining to the concerned job role.

**Annexure 5: Workshop Interaction**

<b>NEW DELHI WORKSHOP-Attendees List</b>					
<b>S.No.</b>	<b>Name</b>	<b>Designation</b>	<b>Organization</b>	<b>Moblie</b>	<b>Email</b>
1	Mr. Saurabh	Manager	SPCL	8130429939	<a href="mailto:saurabh.bansal@shapoorji.com">saurabh.bansal@shapoorji.com</a>
2	Mr. Rajiv Talwar	B.E	R4 Engineers	9810128344	rt8654@yahoo.com
3	Mr. M.K Dubey	Sr. DGM	SPCL	9212700758	manoj.dubey@shapoorji.com
4	Mr. J.B Jain	GM	DIAL	9650194257	jb.jain@gmrgroup.in
5	Mr. B.P. Das	P.M	Simplex Infra	8750056284	bisnu.das@simplexinfra.net
6	Ms. Miriam J. Carter	Director	OPJCC	8827394990	miriam.carter@jindalsteel.com
7	Mr. D. Choudhuri	Sr. GM	ITD Cementation	9582009988	dibyendu.choudhuri@itdcem.co.in
8	Mr. GVN Acharylenu	PCH	HCC Ltd.	8800398941	gvn.acharylenu@hccindia.com
9	Mr. D.S. Sachdev	Former Director General(CPWD)	Retd.	9810501033	dss1949@gmail.com
10	Mr. Shafiq Malik	Project Engineer	Appricate In	9811156947	shehjad.malik@yahoo.com

<b>MUMBAI WORKSHOP -Attendees List</b>					
<b>S.No.</b>	<b>Name</b>	<b>Designation</b>	<b>Organization</b>	<b>Moblie</b>	<b>Email</b>
1	B.S.Fegade	Asst. Manager	L & T-Chiyoda	9819863858	<a href="mailto:bhusanfegad@Intchiyoda.com">bhusanfegad@Intchiyoda.com</a>
2	Jayanta Chowdhary	Asst. Manager	L & T-Chiyoda	9920228578	<a href="mailto:jchowdhary@Intchiyoda.com">jchowdhary@Intchiyoda.com</a>
3	Shakib Khan	Asst. Manager	L & T-Chiyoda	8898762771	<a href="mailto:shakibkhan@Intchiyoda.com">shakibkhan@Intchiyoda.com</a>
4	L.V Deshpande	Manager	L & T-Chiyoda	9923632308	<a href="mailto:laxikantdeshpande@Intchiyoda.com">laxikantdeshpande@Intchiyoda.com</a>
5	Orille Gonsalves	Asst. Manager	L & T-Chiyoda	9870770678	<a href="mailto:oriillegonsalves@Intchiyoda.com">oriillegonsalves@Intchiyoda.com</a>
6	Hardik L	Asst. Manager	L & T-Chiyoda	9619331060	<a href="mailto:hardiklalpuria@Intchiyoda.com">hardiklalpuria@Intchiyoda.com</a>
7	Rajeev	Asst. Manager	L & T-Chiyoda	8879332661	<a href="mailto:prashant@Intchiyoda.com">prashant@Intchiyoda.com</a>
8	Abhishek Kandoi	Asst. Manager	L & T-Chiyoda	9819120750	<a href="mailto:abhishekkandoi@Intchiyoda.com">abhishekkandoi@Intchiyoda.com</a>
9	Ashish Devale	Asst. Manager	L & T-Chiyoda	9892864964	<a href="mailto:ashishkumardevale@Intchiyoda.com">ashishkumardevale@Intchiyoda.com</a>
10	Cherala Manohar	Manager	HCC/Ho	9820319803	<a href="mailto:manohar.cherala@hccindia.com">manohar.cherala@hccindia.com</a>
11	Sachin Chorge	Sr.Manager	Steiner India	9769135556	<a href="mailto:sachin.chorge@steiner India.com">sachin.chorge@steiner India.com</a>
12	Jaiveer Tomar	Co-ordinator	Steiner India	9920426466	<a href="mailto:jaiveer.tomar@steiner India.com">jaiveer.tomar@steiner India.com</a>
13	M.B.Bajnlge	VP	ITNL	9967588364	<a href="mailto:mb.bajnlge@iflsindia.com">mb.bajnlge@iflsindia.com</a>
14	Rajiv Pandey	VP	Dextra India Pvt Ltd	9321170805	<a href="mailto:rpandey@dextra">rpandey@dextra</a>
15	Anand Birajdar	Asst. Manager	Dextra India	9028494194	<a href="mailto:abirajdar@Intchiyoda.com">abirajdar@Intchiyoda.com</a>

			Pvt Ltd		
16	Shripad Bhat	Elect.Manager	L & T-Chiyoda	9920961586	<a href="mailto:shripadbhat@Intchiyoda.com">shripadbhat@Intchiyoda.com</a>
17	R.K.Upadhyay	Project Manager	ESSAR	9930135731	<a href="mailto:rajesh.upadhyay@essar.com">rajesh.upadhyay@essar.com</a>
18	S.Jha	GM(Proj)	ESSAR	9833946485	<a href="mailto:sanjay.jha@essar.com">sanjay.jha@essar.com</a>
19	Shishir Koyare	Sr.Manager(Proj)	ESSAR	9930134871	<a href="mailto:shishir.koyare@essar.com">shishir.koyare@essar.com</a>
20	Rishikesh Bhoyani	Sr.Manager	ESSAR	9930136178	<a href="mailto:rishikesh.bhoyani@essar.com">rishikesh.bhoyani@essar.com</a>
21	Ravi Dewangan	Asst. Manager	L & T-Chiyoda	9967534612	<a href="mailto:ravidewangan@Intchiyoda.com">ravidewangan@Intchiyoda.com</a>
22	Dhiraj Parusram	Deputy Manager	ESSAR Project Ltd	9930133944	<a href="mailto:dhiraj.parsuram@essar.com">dhiraj.parsuram@essar.com</a>
23	Pankaj Srivastava	GM	Gammon India	9923591255	<a href="mailto:pankaj.srivastava@gtpl.com">pankaj.srivastava@gtpl.com</a>
25	Vijay Lad	Sr. Manager	ESSAR Project I Ltd	9930134543	<a href="mailto:vijay.lad@essar.com">vijay.lad@essar.com</a>
26	Jaison Jose	Surveyor	DNV GL	9764904061	<a href="mailto:jaison.jose@dnvgl.com">jaison.jose@dnvgl.com</a>
27	Anand Deshpande		DNV GL	9822625621	<a href="mailto:anand.deshpande@dnvgl.com">anand.deshpande@dnvgl.com</a>
28	Sanjay Jha	GM(Proj)	ESSAR	9833946485	<a href="mailto:sanjay.jha@essar.com">sanjay.jha@essar.com</a>
29	Ebrahim	Partner	Rounak Ent	9867503811	<a href="mailto:rounakenterprises@yahoo.co.in">rounakenterprises@yahoo.co.in</a>
30	Soma Das	Asst. Manager	L & T-Chiyoda	9619690624	<a href="mailto:somadas@Intchiyoda.com">somadas@Intchiyoda.com</a>
31	Manoj Saini	DGM(Eqpt)	HCC	9769924677	<a href="mailto:manoj.saini@hccindia.com">manoj.saini@hccindia.com</a>
32	Vijay Choudhary	Manager	HCC	9930033084	<a href="mailto:vijay.choudhary@hccindia.com">vijay.choudhary@hccindia.com</a>
33	Gunasekar Rajamanickam	GM	HCC	9920390701	<a href="mailto:gunasekar.rajamanickam@hccindia.com">gunasekar.rajamanickam@hccindia.com</a>
34	A.V.Patil	AVP	HCC	9892327820	<a href="mailto:aninash.patil@hccindia">aninash.patil@hccindia</a>
35	D.P.Singh	Dy. GM	R-Infra	9320287836	<a href="mailto:dhirendra.prasingh@relianceindia.com">dhirendra.prasingh@relianceindia.com</a>
36	Chetan Mehta	Partner	Team Venture	9821154742	<a href="mailto:teamventure9@gmail.com">teamventure9@gmail.com</a>
37	Girish Bonde	Head QA & QC	SPCL	9819888070	<a href="mailto:girish.bonde@shapoorji.com">girish.bonde@shapoorji.com</a>
38	Moosa Khan	DGM	SPCL	9167350342	<a href="mailto:moosa.khan@shapoorji.com">moosa.khan@shapoorji.com</a>
39	Neeraj Kapoor	Head Plant	SPCL	9768227141	<a href="mailto:neeraj.kapoor@shapoorji.com">neeraj.kapoor@shapoorji.com</a>
40	Mukesh Rao	AVP	SPCL	9833122523	<a href="mailto:mukesh.rao@shapoorji.com">mukesh.rao@shapoorji.com</a>
41	Avinash Harde	AVP	HCC	9920271852	
42	Chetan Hazare	DGM	HCC	9930193045	<a href="mailto:chetan.hazare@hccindia.com">chetan.hazare@hccindia.com</a>
43	Charmi	Interior Designer	Right Angle	8425044821	<a href="mailto:charmi.keniya@gmail.com">charmi.keniya@gmail.com</a>
44	Ghanshyam	Partner	Diya Corp	9920981109	<a href="mailto:diyacorporation@yahoo.com">diyacorporation@yahoo.com</a>
45	Sanjay Sarwate	Project Manger	L & T	9769776687	<a href="mailto:sarwate@Intecc.com">sarwate@Intecc.com</a>
46	Verinoer Singh	Partner	Diya Corp	9820999886	<a href="mailto:diyacorp@yahoo.com">diyacorp@yahoo.com</a>
48	V.V. Ram Reddy	Project Head	L & T	9908927272	<a href="mailto:vvreddy@Intecc.com">vvreddy@Intecc.com</a>
49	Viren Jaisawal	Director	Right Angle	9323005060	<a href="mailto:rightangle@gmail.com">rightangle@gmail.com</a>
50	Hiren Doshi	Partner	Unicon Infra	9820684814	<a href="mailto:uniconinfra@outlook.com">uniconinfra@outlook.com</a>
51	Prakash S	Project Director	L & T	9909979182	<a href="mailto:prakashs@Intecc.com">prakashs@Intecc.com</a>
52	S Shanker	DGM	HCC	9820318374	<a href="mailto:shankar.s@hccindia.com">shankar.s@hccindia.com</a>
53	Mansoor Khan	Partner	Engneer Construction	9768384286	<a href="mailto:khan.m.engneer@gmail.com">khan.m.engneer@gmail.com</a>

54	Mahendra Mehta	System Support	System Support Services	9820792570	<a href="mailto:mahendra@sysss.com">mahendra@sysss.com</a>
----	----------------	----------------	-------------------------	------------	--

### PUNE WORKSHOP-Attendees List

S.No.	Name	Designation	Organization	Moblie	Email
1	S.I.Chum Khare	Past Chairman	BAI	9371015729	
2	Sanjay Vaichal	M.D	Vaichal Constructions Pvt. Ltd.	9822034103	<a href="mailto:sanjayvaichal@gmail.com">sanjayvaichal@gmail.com</a>
3	Neelkanth Joshi	State Chairman	BAI, Pune	9226787330 / 9850899369	<a href="mailto:joshineelkanth@yahoo.com">joshineelkanth@yahoo.com</a>
4	Tushar Banekar	Regional HSE Coordiantor	S.P.C.L	9922417379	<a href="mailto:tushar.banekar@shapoorji.com">tushar.banekar@shapoorji.com</a>
5	Sachin Dhere	Project Manager	Steiner-HCC	9867020444	
6	Vinodrow B	Manager-QAPOC	Steiner India Ltd.	9096084672	
7	Parwar Jhans.D	Engineer AESA Excom	Architects, Engineers and Surveyors Association	9422015742	
8	Sachin Joshi	Chairman	Architects, Engineers and Surveyors Association	9823483348	<a href="mailto:joshiasso@gmail.com">joshiasso@gmail.com</a>
9	Puneet Khullar	Sr. Manager (MEP)	S.P.C.L	9552566808	<a href="mailto:puneet.khullar@shapoorji.com">puneet.khullar@shapoorji.com</a>
10	Col.(Dr) J R Sharma	CEO	Kushal	8390906372	
11	Rajiv Gambhir	Principal academic	Kushal	8390906368	
12	Kavish Thakwani	Director	Avishkar Realty	9922790139	<a href="mailto:kavish_thakwani@avishkarrealty.com">kavish_thakwani@avishkarrealty.com</a>
13	C.H Ratlani		BAI	9822057300	<a href="mailto:chandvrna_ratalani@yahoo.co.in">chandvrna_ratalani@yahoo.co.in</a>

14	V.N Deshpande		Sterling & Wilson	9850117941	<a href="mailto:vsdeshpande@scerlingwilson.com">vsdeshpande@scerlingwilson.com</a>
15	Vaibhav Chitrao	Add. G M	S.P.C.L	9850188512	<a href="mailto:vaibhav.chitrao@shapoorji.com">vaibhav.chitrao@shapoorji.com</a>

## CHENNAI WORKSHOP - Attendees List

SI No.	Name	Designation	Organization	Moblie	Email
1	Mr. S D Shete	Project Head	L&T Construction (ERM)	8875012453	<a href="mailto:shete@Intecc.com">shete@Intecc.com</a>
2	Mr .N.P.Varadharajan	Head- Workmen Management Centre	L&T-Infra (ERM)	9444398859	<a href="mailto:npv@Intecc.com">npv@Intecc.com</a>
3	Mr. K.Gurusamy	Project Manager	L&T	8754490895	<a href="mailto:kgs@Intecc.com">kgs@Intecc.com</a>
4	Mr. R.Srinivas	Talent Development	L&T HCI IC	9962982914	<a href="mailto:srinivas.remeka@Intecc.com">srinivas.remeka@Intecc.com</a>
5	Mr. C.J.A.Davidraj	Head- Finishes	L&T-B&F	9444018731	<a href="mailto:cjad@Intecc.com">cjad@Intecc.com</a>
6	Mr. B.Murugesan	Head-Tach- Center	L&T- Construction	9444172918	<a href="mailto:murugesan@Intecc.com">murugesan@Intecc.com</a>
7	Mr. S.Ganesan	Project Manager	L&T	9443485382	<a href="mailto:swagan@Intecc.com">swagan@Intecc.com</a>
8	Mr. K.Jaikishan	DGM-P&M	L&T(B&FIC)	8754174459	<a href="mailto:jaikishan@Intecc.com">jaikishan@Intecc.com</a>
9	Mr. V.S.Ramana	GM-CSR visit	L&T	9940198135	<a href="mailto:vsramana@Intecc.com">vsramana@Intecc.com</a>
10	Mr. A.Balaji	Additional GM- Project	Shapoorji Pallonji	9282443036	<a href="mailto:aravamudhan.balaji@shapoorji.com">aravamudhan.balaji@shapoorji.com</a>
11	Mr. Lakshmi Narayanan		Shapoorji Pallonji	9282177242	<a href="mailto:lakshmi.narayanan@shapoorji.com">lakshmi.narayanan@shapoorji.com</a>
12	Mr. K.Karventhan	Manager Tender	Shapoorji Pallonji	9786178102	<a href="mailto:karventhan.kethirvel@shapoorji.com">karventhan.kethirvel@shapoorji.com</a>
13	Mr. Amir zaidi	HOD Planning	Afcon Infra	8754592530	<a href="mailto:amir.zaidi@afcons.com">amir.zaidi@afcons.com</a>
14	Mr. Santosh Chourasia	Planning Manager	Afcon Infra	8754592924	<a href="mailto:santoshchourasia@afcons.com">santoshchourasia@afcons.com</a>
15	Mr. Vishnu N	Project Engg.	Brigade Groups	9841694402	<a href="mailto:nvishu@brigadegroup.com">nvishu@brigadegroup.com</a>

16	Mr. Palani Chrmy.S	Dy.Manager	Brigade Groups	7401279786	<a href="mailto:palanichrmy@brigadegroup.com">palanichrmy@brigadegroup.com</a>
17	Mr. G.Sureshkannan	AGM-HR	URC Construction	9750505858	<a href="mailto:sureshkannan.ganeshan@urc.in">sureshkannan.ganeshan@urc.in</a>
18	Mr. M.Kettimuthu	AGM-Admin	URC Construction	9976502222	<a href="mailto:kettimuthu.muthusany@urc.in">kettimuthu.muthusany@urc.in</a>
19	Mr. D.Lokesh Kumar	Project Engg.	4 Pillars Construction	7299908792	<a href="mailto:lokeshdalpsn@gmail.com">lokeshdalpsn@gmail.com</a>
20	Mr. Pandian	Project Engg.	4 Pillars Construction	7299908793	<a href="mailto:pandiancivilrocks@gmail.com">pandiancivilrocks@gmail.com</a>
21	Mr. A.A.Venkateswaran	DGM-Projects	VA Tech Wabag Ltd.	9362744004	<a href="mailto:aa_venkateswaran@wabag.in">aa_venkateswaran@wabag.in</a>
22	Mr. S.Rajendran	General Manager	Hari Haran Foundation (P) Ltd.	9360224082	<a href="mailto:srajendran@hariharanfoundations.com">srajendran@hariharanfoundations.com</a>
23	Mr. J.V.R.Murthy	DGA-EEB	Essar Projects	8939885233	<a href="mailto:mtata@essar.com">mtata@essar.com</a>
24	Mr. M.Sundara Murthy	Team Leader	Aarvee Associates	9500095156	<a href="mailto:murthymanickam@gmail.com">murthymanickam@gmail.com</a>
25	Mr. Balaji.M	Head-Learning & Training	Saint -Gobain Glass	9789986778	<a href="mailto:balaji.m@saint-gobain.com">balaji.m@saint-gobain.com</a>
26	Mr. A.R.Deepan Chakravarthy	MD Alankar	Alankar Construction	9043526292/9841763108	<a href="mailto:catchmedeepan@gmail.com">catchmedeepan@gmail.com</a>
27	Mr. M.Muthusekaran	Site Manager	SRM Construction	7402071613	<a href="mailto:selvanpm26@gmail.com">selvanpm26@gmail.com</a>
28	Mr. M.Sankar	MD	Yashva House Pvt.Ltd.	9444455349	<a href="mailto:sankar@yashvagroups.com">sankar@yashvagroups.com</a>
29	Mr. K.Umapathy	Pro.	Janani Constructions	9841644840	<a href="mailto:jananiconstructions@hotmail.com">jananiconstructions@hotmail.com</a>
30	Mr. Sudeep Kohre	Project Manager	Trimurth Hitech	9381792283	<a href="mailto:sun_kohre@yahoo.com">sun_kohre@yahoo.com</a>
31	Mr. P.Karthikeyan	Proprietor	Klinc Construction & Services	9841097974	<a href="mailto:klinc@rediffmail.com">klinc@rediffmail.com</a>
32	Mr. A.Shamsudeen	Managing Director	Anish Infra Pvt.Ltd.	9842227886	<a href="mailto:anishbuilder@gmail.com">anishbuilder@gmail.com</a>
33	Mr. R.Gopinath	Managing Director	Sivastam Builders Pvt.	9444059026	<a href="mailto:sivastambuilders@gmail.com">sivastambuilders@gmail.com</a>

34	Mr. J.Paul Nixon	Manager	Motherland Builders	9840638695	<a href="mailto:motherlandbuilders@gmail.com">motherlandbuilders@gmail.com</a>
35	Mr. N.Panimaran	General Manager(Project)	Setps stone Promotors Pvt.Ltd.	9841699012	<a href="mailto:Projects@SetpsstonePromotorsPvt.Ltd">Projects@Setpsstone Promotors Pvt.Ltd.</a>
36	Mr. M.SenthilKumar	Proprietor	Honey Builders	9940650400	<a href="mailto:targetsenthilkumar@gmail.com">targetsenthilkumar@gmail.com</a>

### LUCKNOW WORKSHOP - Attendees List

Sl No.	Name	Designation	Organization	Moblie	Email
1	M Srivastava	Head-Hr	Shalimar Group	9792717302	<a href="mailto:headhr@shalimar.org">headhr@shalimar.org</a>
2	Kishan	SPE	Hyatt Hotel	9721450503	<a href="mailto:kpsingh81@yahoo.co.in">kpsingh81@yahoo.co.in</a>
3	R P Mourya	A G M	Vijay Nirman	7525014485	<a href="mailto:mourya.rp@vijaynirman.com">mourya.rp@vijaynirman.com</a>
4	Vivek Sinha	Sr Project Manger	Chartered Hotels	9721450946	<a href="mailto:viveksinha@charteredhotels.com">viveksinha@charteredhotels.com</a>
5	Ms.Anjani		Eldeco Group		
6	Mr.S.K.Grag	Owner	Eldeco Group		
7	Surya Prakash	Branch office coordinator	Deserve Builders & Developer Ltd,	9453929071	
8	Ajay Mishra	Sight Incharge	Deserve Builders & Developer Ltd,	7376143413	<a href="mailto:Ajaimishra@rediffmail.com">Ajaimishra@rediffmail.com</a>
9	Sanjay Tewari	AVP Operation	DLF Home Developers Ltd	9721900004	<a href="mailto:tewari.sanjay@dlf.in">tewari.sanjay@dlf.in</a>
10	S K Jaggi	COO	Eldeco Group	9956824999	<a href="mailto:skjaggi@eldechousing.co.in">skjaggi@eldechousing.co.in</a>
11	Neeraj Rastogi	MD	Jugal Kishore Estate	9415101851	<a href="mailto:jkroopika.rastogi@gmail.com">jkroopika.rastogi@gmail.com</a>



12	Devendra Singh	MD	GKR Infra	8795999999	gkrinfra@gmail.com
13	Col Kbu Kaul	GM(HR)/Management	Rohtas Project Ltd Prosix Infotech Pvt Ltd	9919501365	kbu_kaul@yahoo.com
14	Rajeev Pandey	DGM	Horizon	9839977951/ 8193800061	rajeev.pandey@hdpl.in
15	G C Srivastava	Head of constructon	Kanchhal Group	9415110325/ 7617008938	gyan3004@gmail.com/ gc.srivastava@kanchhalgroup.in
16	Prakhar Nigam	Asst project Manager	Kanchhal Group	9919651111	prakhar.nigam@live.in
17	Anil Tewari	Director	Eldeco Group	9839404003	<a href="mailto:aniltewariyo@gmail.com">aniltewariyo@gmail.com</a>
18	Adarsh Srivastav	Sr. Executive	Parsvnath Developer	9415601875	<a href="mailto:adarsh.srivastav@parsavnath.com">adarsh.srivastav@parsavnath.com</a>
19	Amit Goel	DGM	Omaxe	9554969301	<a href="mailto:amitgoel@omaxe.com">amitgoel@omaxe.com</a>
20	K S Lal	SPM	Omaxe	9554969312	kamalshankerral@omaxe.com
21	S K Pandey	AGM	Omaxe	9554969302	<a href="mailto:sureshpandey.2003@yahoo.co.in">sureshpandey.2003@yahoo.co.in</a>
22	Rohit singh	AGM	Omaxe	9935092310	rohitsingh@omaxe.com
23	Vineet Kumar	DPM	Omaxe	7895677777	<a href="mailto:vineetkumar@omaxe.com">vineetkumar@omaxe.com</a>
24	Deepak	Engg	Omaxe	7379541555	deepak1323dahiya@gmail.com
25	Vinay	Engg	Omaxe	9555638906	vinay2@omaxe.com
26	Jitendra Gupta	DDM	Omaxe	9554969341	jitendra.gupta@omaxe.com
27	Sanil Kutty	Coorp Off	Signature Infra Developers Pvt.Ltd.	8127953657	lemonrealtors.assest@gmail.com
28	Rahul Srivastava	Sr Manager	Palm Infra	8400099243	rahul.palminfra@gmail.com

29	Ravi Gupta	Billing Engg	Rishita Developers	9919991397	-
30	Rajnish	MD	R G Infra City	9935029666	-
31	Jagjeet Singh	Project Manager	Iconic Infra	8795887000	jagjeet.singh@iconicgroup.in
32	Manoj Srivastav	AGM	Unitech Infra	9839523828	<a href="mailto:manoj.civileng@rediffmail.com">manoj.civileng@rediffmail.com</a>
33	Manoj	AGM	Chandra Modern Builders (I) Pvt Ltd.,	7607006978	manojmayatripathi@yahoo.com
34	S.S Rathour	VP	Adhunik Infra	9198609898	adhunikinfraengineers@gmail.com
35	A P S Rathore	JMD	AMR Global	9839343125	<a href="mailto:apsrathorelko@gmail.com">apsrathorelko@gmail.com</a>
36	S. Morsain	JMD	AMR Global	9838203144	-
37	A K Verma	Manager	Sahara Prime City Limited	9415337949	<a href="mailto:vermajitkumar@gmail.com">vermajitkumar@gmail.com</a>
38	Rajendra Srivastva	Asst Manager	Sahara Prime City Limited	9335233312	<a href="mailto:rajendra64@rediffmail.com">rajendra64@rediffmail.com</a>
39	Manoj Sharma	Manager	Sahara Prime City Limited	9935506402	manoj.sharma@spclmail.in
40	Anand Sagar	Asst Manager	Sahara Prime City Limited	9415323910	<a href="mailto:anandsagar67@gmail.com">anandsagar67@gmail.com</a>
41	Satyendra Tripathi	Asst Manager	Horizon	8193800066	<a href="mailto:satendra@hdpl.com">satendra@hdpl.com</a>

### BHOPAL WORKSHOP - Attendees List

SI No.	Name	Designation	Organization	Moblie	Email
1	Yuvraj Sharma	Site Super Visior	Essarjee Pvt Ltd	7771018853	
2	Vivek Khare	Site Super Visior	Essarjee Pvt Ltd	9584463324	neetuvivek22@gmail.com

3	Ratnesh Tripathi	Site Engineer	Essarjee Pvt Ltd	7773009910	ratneshtripathi25@gmail.com
4	M Trivedi	Site Engineer	Strelling Builder	8109523911	
5	Palak Dutta	Site Engineer	Strelling Builder	9826378251	
6	Surendra Patidhar	Staff	Navakar	9977341186	
7	M P Singh	Managing Partner	MPS contractor	9303737125	<a href="mailto:mpsbhopal@rdiffmail.com">mpsbhopal@rdiffmail.com</a>
8	Shakh Alasir	Staff	Sakh Contractor	9993634514	-
9	Asshu Kahan	Staff	A K Contractor	9303112723	
10	Zahar Hussian	Staff	Sadiya Contractor	9926467555	
11	Naresh Nawani	Head Planning & Construction	Paras Housing	9826020812	nareshbnawani@gmail.com
12	Nishant Pandey	Structural Engg	Ace Consultant	9893197435	
13	Anupam Soni	Structural Engg	Ace Consultant	8878800091	<a href="mailto:nishantpandey82@gmail.com">nishantpandey82@gmail.com</a>
14	R M Chaurasia	T.o, Surve	MITI	9200212366	
15	Rajendra Birole	T.o, B/Construction	MITI	9713236082	rajendrabriole@gmail.com
16	Mahendra Choudhary	T.o, Plumber	MITI	9425676541	mahindrachoudhary1510@gmail.com
17	Prasant Deshmukh	T.o, D/M/C	MITI	9993777674	prasant19117140@gmail.com
18	Nitin Rajigare	T.o, Carpenter	MITI	9425761970	nitinrajigare@gmail.com
19	Ramsujan Vishwakarma	T.o, Carpenter	MITI	9691600281	mitibhopa@gmail.com

20	Parmod Mathur	T.o,Carpenter	Gas ITI	9893803846	mitibhopa@gmail.com
21	Santhosi Vishwakarn	T.o,Carpenter	Gas ITI	9907451045	gasiti.bpl@gmail.com
22	Smt Garima Tiwari	T.o,Painter	MITI	9425523245	garima.tiwari2305@gmail.com
23	Abhishek Tiwari	T.O,Carpenter	G ITI	9201010178	tiwariabhishek10@gmail.com
24	B.S.Rathore	W S A Plumber	G ITI	8109256158	
25	D. K Devedi	TC	MITI	8269369706	
26	R.N Shanuy	T.O,Painter	G ITI	9827738613	
27	Abhishek Singh	T.O,surveyor	MITI	9907224425	abhisheksingh071@yahoo.co.in
28	Archana Saxena	T.S	G ITI	9926616432	
29	Miss Archana Saxena	T.O CS	G ITI	9425687468	-
30	M B Reel	T O	G ITI	9425674862	-
31	Purnima jain	T S	G ITI		
32	A K singh	T.O	G ITI	9425462390	-
33	R S Raghuwansi	T.O	G ITI	9406543723	
34	Abhijit Kunda	T.O	G ITI	9425302278	abhijit.kunda.bpl@gmail.com
35	Praful Mandloi	T.O	G ITI	9827597376	praful.mandloi@gmail.com
36	V D Patel	T.O	G ITI	9039815846	-
37	S V Lokhande	T.O	G ITI	9926344548	-

38	J S Chandel	T.O	G ITI	99931766487	
39	V S Tiwari	T.O	G ITI	9993959474	-
40	K B Sable	T.O,electrician	G ITI	9981637434	-
41	Ajeet Kumar	T.O Rac	G ITI	9039828780	-
42	Santosh Vishwakarma	T.O	G ITI	9907451046	-
43	Pramod Mathur	T.o,Carpenter	G ITI	9893803848	-
44	P N Upadhyay	T.O	G ITI	9977403251	-

### RAIPUR WORKSHOP - Attendees List

Sl No	Name	Designation	Organization	Moblie	Email
1	Bal karan Verma	Civil Engineer	AVAM Consultants	9753777701	<a href="mailto:avam_consultants@yahoo.com">avam_consultants@yahoo.com</a>
2	Gaurav Chandak	Civil Engineer	AVAM Consultants	7415367822	<a href="mailto:gauravc7591@gmail.com">gauravc7591@gmail.com</a>
3	G K Nande	Civil Engineer	C G Housing Board	9424209046	
4		Civil Engineer	C G Housing Board		
5	Mohan Poddar	Civil Engineer	C G Housing Board	9412155155	<a href="mailto:mohanpoddar69@gmail.com">mohanpoddar69@gmail.com</a>
6	Abhishek	CEO	D M Builders	9329101788	
7	Pankaj Sharma	MD	Monshire Buildtech	8109295911	<a href="mailto:pankajsharma@hotmail.com">pankajsharma@hotmail.com</a>
8	R B Singh	Civil Engineer	URLA	9406096593	<a href="mailto:rajbahadursingh270@gmail.com">rajbahadursingh270@gmail.com</a>

9	Umendra Kumar	Civil Contractors	Bhardwdaj Buildtech	9425574049	<a href="mailto:umendrasahu@gmail.com">umendrasahu@gmail.com</a>
10	Subir Acharya	Partner	Goel & Associates	9826122176	<a href="mailto:subiracharya@yahoo.co.in">subiracharya@yahoo.co.in</a>
11	Vivek Pal	Civil Engineer/Civil Contractors	Friends Construction	9165599993	-
12	Sahil Gridhar	Contractor Civil/Erection	Gridhar Builder & construction	9630350005	<a href="mailto:gridharbuilder@gmail.com">gridharbuilder@gmail.com</a>
13	Anurag pandey	Civil Engg(Site)	Fortune Buildcon	9770532262	
14	Lokesh Sinha	MD	Fortune Buildcon	9981178121	<a href="mailto:fortunebuildcon.2@gmail.com">fortunebuildcon.2@gmail.com</a>
15	Avinash Jain	Director	AVR Infratech	9300177299	<a href="mailto:avinashjain@rediffmail.com">avinashjain@rediffmail.com</a>
16	H S Sodhi	ED	S K Samanta	9836164090	
17	Narendra Tekwani	P Engg.	AishwaryaGroup	9584566000	-
18	Peter Evasmus	Master Trainer	OPJCC	8827478330	<a href="mailto:peter.evasmus@opjccraigarh.edu">peter.evasmus@opjccraigarh.edu</a>
19	Prabal Bhardwaj	Recurit & Placement	OPJCC	7389910789	<a href="mailto:prabalbhardwaj@gmail.com">prabalbhardwaj@gmail.com</a>
20	Nitin Chaubey	Manager Training & Placement	OPJCC	7389910777	<a href="mailto:nitinchaubey@opjccraigarh.edu">nitinchaubey@opjccraigarh.edu</a>
21	Aakash Luthra	Partner	Vas Nirman	9893731000	<a href="mailto:vasnirman@gmail.com">vasnirman@gmail.com</a>
22	Lomesh	Sub Engg	C G Pwd	8103601804	<a href="mailto:lomesh270@gmail.com">lomesh270@gmail.com</a>
23	Ashish	Sub Engg	C G Pwd	9993840226	<a href="mailto:ashishwarlyani@gmail.com">ashishwarlyani@gmail.com</a>
24	Rameshwar	Sub Engg	PWD Raipur	9165679990	<a href="mailto:rd02@dr.com">rd02@dr.com</a>
25	Chandrakant Nishad	Jr Engg	Chopra Builders	8982948051	<a href="mailto:nishadchandrakant@gmail.com">nishadchandrakant@gmail.com</a>
26	Sonu	Jr Engg		9753522603	

27	T S Thakur	Proprieter	Srinagar Rpr	93011839309	
28	S. Madhu	Proprieter	Tripura Rpr	955905503	
29	R K	Proprieter	Bhalagaon Rpr	9826626556	-
30	ViNot Foundd Bhardwaj	Const Engg	Arani Associates	9826466533	-
31	Sunil Thakur	Civil Engg	Green avenue	9329118725	
32	Balmukund	Sub Engg	C G P W D	9406081855	-
33	Bhagwan Das	Sub Engg	C G P W D	9098197883	
34	Nirmal Muskan	Supervisor	C G P W D	7879397578	
35	H K Binayak	Sub Engg	PWD	9425559871	-
36	Damendra Verma	Sub Engg	PWD	9993290890	-
37	D L Dhru	S E	PWD	9479106219	-
38	Sarvesh Mathur	Regional Manager	Labournet	8800446657	-
39	Chetan Dixit	Sr Manger	Labournet	9811525485	
40	Ranjan Kaur	Head Training	KSK Power	9963320011	<a href="mailto:ranjank@ksk.co.in">ranjank@ksk.co.in</a>
41	Hemant Arora	Sub Engg	Lok Nirman	7587061880	<a href="mailto:h_rpr@">h_rpr@</a>
42	Gurpreet Singh	Owner	G S Construction	9981063333	<a href="mailto:gurpreet1941@gmail.com">gurpreet1941@gmail.com</a>
43	Ranjan	Manager	M J Construction	9302806932	<a href="mailto:mjconstruction66@yahoo.in">mjconstruction66@yahoo.in</a>
44	Akshay	Student	IIM Raipur	8349501008	<a href="mailto:pgp13008.akshay@iimraipur.com">pgp13008.akshay@iimraipur.com</a>
45	Abhijeet	Student	IIM Raipur	8349501001	<a href="mailto:pgp13001.abhijeet@iimraipur.com">pgp13001.abhijeet@iimraipur.com</a>

46	Subash Pal	Civil Contractors	Friends Construction	9424171888	-
47	Jogiram Sahu	Civil Contractors	Friends Construction	9981475565	-
48		Civil Contractors	Friends Construction	93291100227	-
49	Prabhu Lal	Civil Contractors	Friends Construction	9009902061	-
50	Ram	Civil Contractors	Friends Construction	9713202538	-
51	Ganesh	Civil Contractors	Friends Construction	9826426560	-
52	Sant Kumar sahu	Civil Contractors	Friends Construction	9009662877	-
53	Mohan Anty	Chairman	CG BOC Board	9826134200	-
54	Prafull	CMD	PSND Real Estate Pvt Ltd.	9669337555	<a href="mailto:prafull1098@gmail.com">prafull1098@gmail.com</a>
55	K Roy	DPM	Simplex Infra	9425297257	<a href="mailto:kshudiram.roy@simplexinfra.net">kshudiram.roy@simplexinfra.net</a>
56	C S be	EE	CGHB	8223945566	-
57	Yogesh jain	Partner	CGHB	9302080001	<a href="mailto:jainyogeshanuga@gmail.com">jainyogeshanuga@gmail.com</a>
58	A Shrivastwa	A E Q	PWD	9424120983	<a href="mailto:abhinav3041@rediffmail.com">abhinav3041@rediffmail.com</a>
59	Dara Singh	Contractor	Himalaya Rooftech Engg	9993992107	-
60	Sanjay Dev	Owner	Shubash Construction	9827167450	-
61	Hemant	Owner	Shubash Construction	9308687895	-
62	Santosh sahu	Contractor		9926137330	-
63	Lucky Chopra	Manager	Jai Shree const	9424275444	<a href="mailto:laxmicc@gmail.com">laxmicc@gmail.com</a>
64	Cahtrapal Patel	Contractor	Private	9893371739	-
65	S N Tamrakar	Proprieter	Anew Const	9826157244	-



66	Chinuram Sahu	Contractor	Private	9669353478	-
67	Faaguram	Contractor	Private	9827117252	-
68	M K Soni	Site Assistant	PWD	9827972340	-
69	Sunil Deshmukh	Engg	SSO,Durg	8130678358	-
70	Pawan Patel	Contractor	Private	9926210459	-
71	P K Sahu	Sub Engg	PWD	9827181754	-
72	M K Sahu	Sub Engg	PWD	9893571641	-
73	Fhal singh Sahu	Contractor	Private	9827312180	-
74	Shiv Kumar	Contractor	Private	9074236766	-
75	Ram Kumar	Site Supervisor	Private	8253075659	-
76	Purnima Gautam	HR/ADM	Ralas Group	9669877700	-

### KOLKATA WORKSHOP - Attendees List

Sl No.	Name	Designation	Organization	Moblie	Email
1	Bimal Singh Sethia	Director	Satyam Projects Limited	9433010000	<a href="mailto:bssenthia@gmail.com">bssenthia@gmail.com</a>
2	G N Pramanik	R T M	L & T	9830130281	<a href="mailto:pramanikgn@Intecc.com">pramanikgn@Intecc.com</a>
3	Manish Kumar	P M	L & T	9007003153	<a href="mailto:manishkumar@Intecc.com">manishkumar@Intecc.com</a>
4	Manish Chauhan	P M	L & T	9007003153	<a href="mailto:mPCR@Intecc.com">mPCR@Intecc.com</a>

5	P K Som	P M	L & T	9830144335	<a href="mailto:pkson@Intecc.com">pkson@Intecc.com</a>
6	P K Soni	Project Director	L & T	8435003700	<a href="mailto:pksoni@Intecc.com">pksoni@Intecc.com</a>
7	S.K. Mukherjee	Sr. Manager	L & T	9432274588	<a href="mailto:subirm@Intecc.com">subirm@Intecc.com</a>
8	Ranjan Jaiswal	P D	I T D Cementation	8584016777	<a href="mailto:ranjan.jaiswal@itdcem.co.in">ranjan.jaiswal@itdcem.co.in</a>
9	Tarun Singha Roy	Sr.GM	Shapoorji Pallonji	9874177918	<a href="mailto:taron.singharoy@shapoorji.com">taron.singharoy@shapoorji.com</a>
10	Avijit Banarjee	DGM	Shapoorji Pallonji	8336907905	<a href="mailto:avijit.banarjee@shapoorji.com">avijit.banarjee@shapoorji.com</a>
11	Prithiwijit Sanyal	Sr. Engg	Shapoorji Pallonji	9433911357	<a href="mailto:prithwjit.sanyal@shapoorji.com">prithwjit.sanyal@shapoorji.com</a>
12	Nilmadhal Banrjee	DGM Hr	I T D Cementation	9748742175	<a href="mailto:n.bandyopadhyay@itdcem.co.in">n.bandyopadhyay@itdcem.co.in</a>
13	Suman Banarjee	Dy Mgr(Hr)	Simplex Infra Ltd	9163612225	<a href="mailto:suman.banarjee@simplexinfra.com">suman.banarjee@simplexinfra.com</a>
14	Malu Roy	Sr.Engg	Simplex Infra Ltd	9126143030	<a href="mailto:maluroy33@gmail.com">maluroy33@gmail.com</a>
15	S.Dutta	Sr.Project Mgr	L & T	9007752655	<a href="mailto:sdutta@Intecc.com">sdutta@Intecc.com</a>
16	D Das Roy	Dy Mgr	L & T	9903327664	<a href="mailto:ddr@Intecc.com">ddr@Intecc.com</a>

17	C.Chattergi	Sr.Const.Mgr	L & T	9903993157	<a href="mailto:chandrachur@Intecc.com">chandrachur@Intecc.com</a>
18	Tushar Kanti Das	Mgr.Accounts	L & T	9903375101	<a href="mailto:tusharkdas@Intecc.com">tusharkdas@Intecc.com</a>
19	Taraknath Haldar	Sr.Mgr	L & T	9163409195	<a href="mailto:tnh@Intecc.com">tnh@Intecc.com</a>
20	C.K.Jana	Sr.Mgr	L & T	9748968227	<a href="mailto:ckjana@Intecc.com">ckjana@Intecc.com</a>
21	R Elangover	PM	L & T	9007016602	<a href="mailto:elangover@Intecc.com">elangover@Intecc.com</a>
22	Naqib	Sr.Mgr	I T D Cementation	9832792975	<a href="mailto:naqib.itdcem@gmail.com">naqib.itdcem@gmail.com</a>
23	Rajat Sen	Planning Engg	I T D Cementation	8013253954	<a href="mailto:rajat.sen@itdcem.co.in">rajat.sen@itdcem.co.in</a>
24	Ashraf Ahmad	Construction Mgr	I T D Cementation	9163363449	<a href="mailto:ashrafsiddiqui73@gmail.com">ashrafsiddiqui73@gmail.com</a>
25	Soumik Sen	Chief Engg	M. N. DASTUR & COMPANY (P) LTD	8790892930	<a href="mailto:soumik.s@dastur.com">soumik.s@dastur.com</a>
26	Nilmoni Roy	Proprietor	CASCON	93300-37471	<a href="mailto:roynilmoni@yahoo.co.in">roynilmoni@yahoo.co.in</a>
27	Santanu Choudhary	PM	Mcnally Bharat Engg Co Ltd	9830269495	<a href="mailto:santanu.ch@mbecl.com">santanu.ch@mbecl.com</a>
28	Sushanta	Manager	L & T	9007082995	<a href="mailto:sushanta@Intecc.com">sushanta@Intecc.com</a>

29	Ayan Banarjee	Dy GM	Primare Projects Ltd	9007038699	<a href="mailto:ayan.banarjee@primare.in">ayan.banarjee@primare.in</a>
30	G C Gupta	Proprietor	G C Gupta	9433045345	<a href="mailto:gupta.gc@gmail.com">gupta.gc@gmail.com</a>
31	Subhasis Hazra	Senior Construction Manager	L & T	9433560937	<a href="mailto:hazaras@Intecc.com">hazaras@Intecc.com</a>
32	P K Banarjee	President	Space group	9836900366	<a href="mailto:pkbanarjee@spacelifestyle.com">pkbanarjee@spacelifestyle.com</a>
33	Sankar Basu	Project Co-ordinator	Space group	9826900011	<a href="mailto:sankar@spacelifestyle.com">sankar@spacelifestyle.com</a>
34	S N Bandyopadhyay	Head Construction	Mcnally Bharat Engg Co Ltd	9830977660	<a href="mailto:sambhu.bandopashyay@mbecl.com">sambhu.bandopashyay@mbecl.com</a>
35	Himadri Sen	Asst Gm Const	Mcnally Bharat Engg Co Ltd		<a href="mailto:himadri.sen@mbecl.com">himadri.sen@mbecl.com</a>

## Guwahati Workshop-Attendees List

S.No.	Name	Designation	Organization	Moblie	Email
1	Mr. S.C.Goswami	Chief Eng.	Assam Police Hsng. Corp.	7399025301	<a href="mailto:comcell@aphc@gmail.com">comcell@aphc@gmail.com</a>
2	Mr. Somnath Maity	Sr. Eng.	Shapoorji Pallonji	9706082456	<a href="mailto:somnath.maity@shapoorji.com">somnath.maity@shapoorji.com</a>
3	Mr. Abhilash Choudhary	DGM	Shapoorji Pallonji	9706082461	<a href="mailto:abhilash.choudhary@shapoorji.com">abhilash.choudhary@shapoorji.com</a>
4	Mr. Sanjeeb Kanati	Director (MS)	Third Eye Education pvt.ltd.	9435014576	<a href="mailto:sanjeebkanati@gmail.com">sanjeebkanati@gmail.com</a>
5	Mr. Prasanta Dutta	Admin Officer	BSDTI	8471891737	-
6	Mr. Uttam Gogoi	Instructor	BSDTI	8752921299	<a href="mailto:uttamgogoi47@gmail.com">uttamgogoi47@gmail.com</a>
7	Mr. Rupam Sonowal	Instructor	BSDTI	9435863284	<a href="mailto:rupamsonowal21@gmail.com">rupamsonowal21@gmail.com</a>
8	Mr. Pronab Hazarika	Instructor	BSDTI	9957440278	-

9	Mr. David gogi	Instructor	BSDTI	8812073773	-
10	Mr. Moheshwar Dowarak	Instructor	BSDTI	9954294704	-
11	Abhijit Saikia	Instructor	BSDTI	9957930624	<a href="mailto:abhijit.saikia777@gmail.com">abhijit.saikia777@gmail.com</a>
12	Mr. Dvleswar	Instructor	BSDTI	9401212076	-
13	Mr. Juginda Urang	Techer	BSDTI	7399479880	
14	Mr. Bhaskar Saikia	Techer	BSDTI	9957204625	
15	Mr. Biju Bor Saikia	Computer Operetor	BSDTI	8822023725	<a href="mailto:bijuborsaikia2013@gmail.com">bijuborsaikia2013@gmail.com</a>
16	Mr. Anup Rajkonala	Civil contractor	BSDTI	9957004138	<a href="mailto:anuprajbuild2@gmail.com">anuprajbuild2@gmail.com</a>
17	Mr. Labin Karmakar	Chairman	BSDTI	9435131026	<a href="mailto:labinkarmakar1973@gmail.com">labinkarmakar1973@gmail.com</a>
18	Mr. Satish Kumar Mittal	Partner	Mittal associates	9864013881	<a href="mailto:satishmittal236@yahoo.com">satishmittal236@yahoo.com</a>
19	Mr. Kshama Dhor Delea	Contractor	10CL BGR	9435512586	<a href="mailto:kshama.delea@gmail.com">kshama.delea@gmail.com</a>
20	Mr. Haren Saikia	Director	Swana Valley Construction Pvt.Ltd.	9864006167	<a href="mailto:saikia2000@gmail.com">saikia2000@gmail.com</a>
21	Mr. Lakhijit Saikia				<a href="mailto:lakhiajit2@gmail.com">lakhiajit2@gmail.com</a>
22	Mr. Sanjib Raj Konwar	Proprietor	Rajkonwar Associate	9859382553	<a href="mailto:rajkonwarandsons@gmail.com">rajkonwarandsons@gmail.com</a>
23	Mr. Jitin Talnkdon	Business	G.G.Traction	9864761401	<a href="mailto:jitintalnkdon30@yahoo.in">jitintalnkdon30@yahoo.in</a>
24	Mr. Sant Lal Mittal	Partner	BMM Associates	9435044241	<a href="mailto:mittalsantal@yahoo.in">mittalsantal@yahoo.in</a>
25	Mr. Rajendra Kumar Deka			8011747351	-
26	Mr. Tapan Sarama			9854633566	-
27	Mr. Rakesh Sarama			9707437586	<a href="mailto:rakeshsaramr23@gmail.com">rakeshsaramr23@gmail.com</a>

28	Mr. Tarun chandra Kakati			943538643	<a href="mailto:tarunkakati@hotmail.com">tarunkakati@hotmail.com</a>
29	Mr. Girin Chandra. Gogoi	Business	BCPL/OIL	9435533773	<a href="mailto:gininagro@gmail.com">gininagro@gmail.com</a>
30	Mr. Arvind Kochar	Business	Jainex	9864018000	<a href="mailto:arvind@jainexgroup.in">arvind@jainexgroup.in</a>
31	Mr. Prhupan Chetia	Structural work	Contractor(Prop.)	9954216535	-
32	Mr. Binoy Khandelia	MD	NEEFS (India) Pvt.Ltd.	8399005168	<a href="mailto:neffsindia12@rediffmail.com">neffsindia12@rediffmail.com</a>
33	Mr. Ali			9864297663	-
34	Mr. Amit			9706119242	-
35	Mr. Syed Md. Bakir	Chief Eng. CARIITSP & RIDFI	PWD	9435077267	<a href="mailto:bakir23@rediffmail.com">bakir23@rediffmail.com</a>
36	Mr. Debajit Bhuyan	Under Secretary	PWRD	9864067953	<a href="mailto:debajitbhuyan@yahoo.co.in">debajitbhuyan@yahoo.co.in</a>
37	Mr. ER. Saleh Ahmed Choudhury	AEE	PWRD	9435072821	<a href="mailto:sacz.net@gmail.com">sacz.net@gmail.com</a>
38	Mr. Ranjit Borthakur	Assistant Director	DECT Assam	9435472767	<a href="mailto:ranjit.borthakur@rediffmail.com">ranjit.borthakur@rediffmail.com</a>
39	Mr. Mousumi Sen	Joint Director	DECT Assam	9435116814	<a href="mailto:mсен_2018@yahoo.com">mсен_2018@yahoo.com</a>
40	Mr. Jibon Bheli	Contractor	ONGC	9435157011	<a href="mailto:jibon123middilmil.com">jibon123middilmil.com</a>
41	Mr. Manoj Singh		CPWD	7033830031	-
42	Mr. P.K Sharma	Presedent	Credai Assam	9435145537	<a href="mailto:pranab_sharma92@yahoo.com">pranab_sharma92@yahoo.com</a>
43	Er. Prahlad Sankar Bhagawati	Sr. Manager	NEEPCO Ltd	9854971058	<a href="mailto:ps.bhagawati@yahoo.com">ps.bhagawati@yahoo.com</a>
44	Mr. M.Bezbarouer	Admin Manager	Care (NGO)	9707050640	-
45	Mr. B.C.Barbaruah	Director General	DECT Assam	9443518553	<a href="mailto:dirdect@gmal.com">dirdect@gmal.com</a>

## Hyderabad Workshop-Attendees List

S.No.	Name	Designation	Organization	Moblie	Email
1	Lt.Col. (Retd.) R.V. Rao	Addl GM	SPCL	9581225601	renati.rao@shapoorji.com
2	Mr. P. Mohan Pillai	Dy. GM	SPCL	9246289123	mohan.pillai@shapoorji.com
3	Mr. N. Parameswara Rao	Manager	SPCL	9494766678	parameswara.nandam@shapoorji.com
4	Mr. Srinivas	Sr. Eng.	SPCL	8096392323	srinivas.choutopalem@shapoorji.com
5	Mr. P. Rangnatha	Member	CREDAI, A.P	9866220900	sthpath:knl@gmail.com
6	Ms. S. R. Malivi Devi	Manager	Involute Institute of Tech. TIG	9949012382	maliuisenkara@involutetraining.com
7	Mr. Chakradher M	CEO	Dhanush Engg. Services (I) Pvt. Ltd.	9849172771	chakradhar@maptraining.com
8	Mr. J. Jawaharlal	GM Operations	Dhanush Engg. Services (I) Pvt. Ltd.	9848475040	jawaharlal@maptraining.com
9	Mr. P. Shiva Shankar	Assistant Director	National Academy of Construction	9440683583	infoznac@gmail.com
10	Mr. Hemu Bhalla	Assistant Director	National Academy of Construction	9912399361	hrathod2015@gmail.com
11	Mr. A. Ramesh Kumar	Assistant Director	National Academy of Construction	9618218230	rameshkumar405@gmail.com
12	Mr. D. Venkant Ram	Dir/HD/& MR	National Academy of Construction	9701818521	
13	Mr. Niraj Seth	Director	EY	9818340571	niraj.seth@in.ey.com
14	Mr. M. V. Rajeshwara Rao	CEO	CREDAI, HYD	8008579620	mvrajeshwararao@gmail.com
15	Mr. P.Gangadhar	Director, NAC	NAC, HYD	9395102825	gpendkar@gmail.com

16	Dr. B. Chenna Kesava Rao	Principal	CBIT	9866141821	principal@cbit.ac.in
17	Mr. C. Srinivasulu	MD	C. S Consultants Miya Pur, HYD	9177370356	cs_srinivas123@yahoo.co.in
18	Mr. V. Ravindra Charya	Retd. CE.	GHMC/ BSCPL	9885172672	ravi_velijala@yahoo.co.in
19	Dr. N. Ananth Reddy	Dy. Director	Ground Water Consultancy	9392321236	drnareddy@yahoo.com
20	Mr. P. Haribabu	Chief Consultant	Aparna Constructions and Es	8096905554	p.haribabu@aparnaconstructions.com
21	Mr. K. Bikshapathi	DG	NAC	9177445595	bkondai@yahoo.com
22	Mr. L. Srinivas	P.M	Ankur Projects pvt. Ltd. Hyd	9866387389	srinivalella@yahoo.co.in
23	Mr. B. N. Mani	Ex.Sr.Mgr.Trg.	Pipal Tree Venture pvt. Ltd.	9603832266	bnagamani@pipaltreeventure.com
24	Prof. K. R. Ramana	Professor	National Institute of Construction Management & Research	9849065624	kr.ramana@gmail.com
25	Dr. V. Srihari	Professor Dy Dean	NICMAR	9492921771	vsrihari@nicmar.ac.in
26	Prof. Raja Sekhar Mamillapalli	Assistant Professor	NICMAR	9502334187	nitmtech@gmail.com
27	Ar. Er. S. P. Anchuri	Architect & Structural Eng.	Indian concrete institute	9246523197	spanchuri@gmail.com
28	Mr. A. S. Rajendra	P.G. Student	NICMAR	9908259913	rajendra.attili47@gmail.com
29	Mr. V. Pavan Kumar	P.G. Student	NICMAR	9885099929	pavan.vutukuru1@gmail.com
30	Mr. G. V. Vijay	Dept. Head Maintenance	Involute Training	9959232315	vijaychandra@involutetraining.com
31	Mr. N. Kishore	Dy. Center Manager	Involute Training	9666520884	narrakishore@involutetraining.com
32	Mr. K. Krishna Reddy	KKR Foundation- Managing Trainee	KKR Foundation	9866594107	kreddy@gmail.com



33	Mr. M. Kannan	Manager	L&T, HCIC	7702277739	vtmk@Intecc.com
34	Mr. S. Shahul Hameed	Project Co-ordination	Giridhari Constructions	8106833800	sshameed2012@gmail.com
35	Dr. K. Jagannadha Rao	Professor	CBIT	9849075484	kjagannadherao@cbit.ac.in
36	Mr. Rama Mohan Rao	Retd. Regional Manager	NSIC	9440667959	
37	Mr. P. Haritha	Faculty-NAC	NAC	9618674916	parucheriharitha05@gmail.com
38	Mr. T. Rama Krishna	Director	Synergy Infra Consultant	9949985840	<a href="mailto:samakrishna@synergyinfra.com">samakrishna@synergyinfra.com</a>