

1 Revised Application Documentation: Version 5 /22 May, 2015

QUALIFICATION FILE – CONTACT DETAILS OF SUBMITTING BODY

Name and address of submitting body:

Construction Skill Development Council of India

Address:- 204, Aashirwad Complex, D-1, Green Park, New Delhi - 110016

Tel: +91-11-46584466

Name and contact details of individual dealing with the submission

Name: Ms. Jancy Mathew

Position in the organisation: Head Standards and Research

Address if different from above:

Same as above

Tel number(s): +91-11-46584466

E-mail address: standards@csdcindia.org

List of documents submitted in support of the Qualifications File

1. Career Map of Scaffolding Occupation - Annexure 1
2. QP CON/Q0313- Annexure 2

QUALIFICATION FILE SUMMARY

Qualification Title	Assistant Scaffolder Conventional - CON/Q0313		
Body/bodies which will assess candidates	<ul style="list-style-type: none"> • MCG • Star Projects 		
Body/bodies which will award the certificate for the qualification.	CSDCI		
Body which will accredit providers to offer the qualification.	CSDCI		
Occupation(s) to which the qualification gives access	Scaffolding		
Proposed level of the qualification in the NSQF.	2		
Anticipated volume of training/learning required to complete the qualification.	350 hrs		
Entry requirements / recommendations.	Preferably 5 th standard		
Progression from the qualification.	Scaffolder (System / Conventional)- Level 3		
Planned arrangements for RPL.	Work is under progress		
International Comparability	Compared with UK NOS and Australia NOS		
Formal structure of the qualification			
Title of unit or other component (include any identification code used)	Mandatory/ Optional	Estimated size (learning hours)	Level
CON/N0353: Assist in Erection and dismantling of conventional scaffold using bamboo and ballis	Mandatory	130	2
CON/N0354: Assist in erection and dismantling of scaffold using pipe and coupler	Mandatory	164	2
CON/N8001: Work effectively in a team to deliver desired results at the workplace	Mandatory	24	2
CON/N9001: Work according to personal health, safety and environment protocol at construction site	Mandatory	32	2

Please attach any document giving further detail about the structure of the qualification – eg a Curriculum or Qualification Pack.

Give details of the document here:

1. QP CON/Q0313- Annexure 2

SECTION 1

ASSESSMENT

Name of assessment body:

If there will be more than one assessment body for this qualification, give details.

- MCG
- Star Projects

Will the assessment body be responsible for RPL assessment?

Give details of how RPL assessment for the qualification will be carried out and quality assured.

The RPL assessment will be carried out through screening, identifying the skills gaps, provide bridge training to cover the competency gap and then conduct final assessment of the candidates.

Describe the overall assessment strategy and specific arrangements which have been put in place to ensure that assessment is always valid, consistent and fair and show that these are in line with the requirements of the NSQF:

trained & certified by CSDCI through Training of Trainers program. The assessment involves two processes. The first process is gathering the evidence of the competency of individuals. The second part of the assessment process is the judgement as to whether a person is competent or not. The assessment plan contains the following information:

- What will be assessed, i.e. the competency based on each NOS
- How assessment will occur i.e. methods of assessment
- When the assessment will occur
- Where the assessment will take place i.e. context of the assessment (workplace/simulation)
- The criteria for decision making i.e. those aspects that will guide judgements and
- Where appropriate, any supplementary criteria used to make a judgement on the level of performance.

The assessment is conducted through theory, viva voce and practical.

Please attach any documents giving further information about assessment and/or RPL.

Give details of the document(s) here:

Not Applicable

ASSESSMENT EVIDENCE

Complete the following grid for each grouping of NOS, assessment unit or other component as per the assessment criteria. Insert the required number of rows.

CRITERIA FOR ASSESSMENT OF TRAINEES

Assistant Scaffolder Conventional

CON/Q0313

Construction Skill Development Council Of India

Guidelines for Assessment

1. Criteria for assessment for each Qualification Pack will be created by the Sector Skill Council. Each Performance Criteria (PC) will be assigned marks proportional to its importance in NOS. SSC will also lay down proportion of marks for Theory and Skills Practical for each PC
2. The assessment for the theory part will be based on knowledge bank of questions created by the SSC
3. Individual assessment agencies will create unique question papers for theory part for each candidate at each examination/training centre (as per assessment criteria below)
4. Individual assessment agencies will create unique evaluations for skill practical for every student at each examination/training centre based on this criteria
5. To pass the Qualification Pack, every trainee should score a minimum of 70% individually in theory and practical for every NOS.
6. The trainee should score 100% marks individually in theory and practical for safety related NOS and performances criteria as and where applicable in each qualification pack.
7. The Assessor shall check the final outcome of the practices while evaluating the steps performed to achieve the final outcome
8. The trainee shall be provided with a chance to repeat the test to correct his procedures in case of improper performance, with a deduction of marks for each iteration.
9. After the certain number of iteration as decided by SSC, the trainee is marked as fail, scoring zero marks for the procedure in the activity (practical's)
10. In case of successfully passing only certain number of NOS's, the trainee is eligible to take subsequent assessment on the balance NOS's to pass the Qualification Pack within the specified timeframe set by SSC

				Marks Allocation	
Assessable Outcome	Assessment criteria	Total Marks	Out Of	Theory	Practical Skills
CON/N0353: Assist in Erection and dismantling of conventional scaffold using bamboo and ballis	PC1. prepare base by leveling and compacting ground for erection of scaffold	100	2	1	4
	PC2. select, shift and stack required quantity of materials, components at work location as per instructions		3		
	PC3. barricade working area and fix guard rails, safety nets for safe working conditions		3	1	5
	PC4. assist in marking, transferring of levels from reference points using water level tube		3		
	PC5. check bamboo / ballis for straightness, free from splits, shakes, large cracks, and other defects		4	1	3
	PC6. check condition of ropes prior to use		3	1	4
	PC7. place jute rope in water well before using it for tying of bamboo / ballis		2		
	PC8. select jute ropes, fiber ropes based on diameter , length and as per instructions		5	1	4
	PC9. place sole board on ground as per marking		3	1	2
	PC10. erect scaffold using bamboo / ballis in a sequential manner and provide necessary support as per instructions		10	2	8

	PC11. tie different types of knots rigidly using fiber/jute rope		6	1	5
	PC12. assist in aligning and providing support to scaffold as per instructions		6	1	5
	PC13. assist in checking verticality of scaffold		5	1	4
	PC14. place and fix appropriate plank board / walk boards, guard rail, toe board and other accessories for working		5	1	4
	PC15. assist in dismantling of scaffold in a sequential manner safely under instructions		20	4	16
	PC16. lower scaffold materials in safe manner		10	2	8
	PC17. clean and scaffold materials for further use		5	1	4
	PC18. follow standard safety procedure and housekeeping practices		5	1	4
		Total	100	20	80
CON/N0354: Assist in erection and dismantling of scaffold using pipe and coupler	PC1. prepare base by leveling and compacting ground for erection of scaffold	100	2	1	1
	PC2. select, shift and stack required quantity of materials, components at work location as per instructions		5	1	4
	PC3. barricade working area and fix guard rails, safety nets for safe working conditions		3	1	6
	PC4. assist in marking, transferring of levels from reference points using water level tube		4		
	PC5. check condition of coupler, pipes and fixtures for any bend and deviation from shape		6	1	5
	PC6. select swivel coupler, right angle coupler (fixed coupler) based on requirement of scaffold fixing		4	1	3
	PC7. select pipes based on nominal bore diameter, length and check for any bend in pipes		4	1	3
	PC8. erect scaffold using pipes and coupler in a sequential manner and provide necessary support using suitable components as per instructions		10	2	8
	PC9. fix coupler, clamps tightly as per instructions		6	1	5
	PC10. assist in aligning and providing support to scaffold as per instructions		5	1	4
	PC11. assist in checking verticality of scaffold		6	1	5
	PC12. place and fix appropriate plank board / walk boards, guard rail, toe board and other accessories for working		5	1	4
	PC13. assist in dismantling of scaffold in a sequential manner safely under instructions		20	4	16
	PC14. lower scaffold materials in safe manner		10	2	8
	PC15. clean and scaffold materials for further use		5	1	4
	PC16. follow standard safety procedure and housekeeping practices		5	1	4
		Total	100	20	80
CON/N8001: Work effectively in a team to deliver desired results at the workplace	PC1. pass on work related information/ requirement clearly to the team members	100	10	2	8
	PC2. inform co-workers and superiors about any kind of deviations from work		5	1	4
	PC3. address the problems effectively and report if required to immediate supervisor appropriately		5	1	4

	PC4. receive instructions clearly from superiors and respond effectively on same		5	1	4
	PC5. communicate to team members/subordinates for appropriate work technique and method		5	1	4
	PC6. seek clarification and advice as per requirement and applicability		10	2	8
	PC7. hand over the required material, tools tackles, equipment and work fronts timely to interfacing teams		30	6	24
	PC8. work together with co-workers in a synchronized manner		30	6	24
		Total	100	20	80
CON/N9001: Work according to personal health, safety and environment protocol at construction site	PC1. identify and report any hazards, risks or breaches in site safety to the appropriate authoritys	100	5	1	4
	PC2. follow emergency and evacuation procedures in case of accidents, fires, natural calamities		5	1	4
	PC3. follow recommended safe practices in handling construction materials, including chemical and hazardous material whenever applicable		10	2	8
	PC4. participate in safety awareness programs like Tool Box Talks, safety demonstrations, mock drills, conducted at site		5	1	4
	PC5. identify near miss , unsafe condition and unsafe act		5	1	4
	PC6. use appropriate Personal Protective Equipment (PPE) as per work requirements including: <ul style="list-style-type: none"> • Head Protection (Helmets) • Ear protection • Fall Protection • Foot Protection • Face and Eye Protection • Hand and Body Protection • Respiratory Protection (if required) 		10	2	8
	PC7. handle all required tools, tackles , materials & equipment safely		5	1	4
	PC8. follow safe disposal of waste, harmful and hazardous materials as per EHS guidelines		5	1	4
	PC9. install and apply properly all safety equipment as instructed		15	3	12
	PC10. follow safety protocol and practices as laid down by site EHS department		15	3	12
	PC11. collect and deposit construction waste into identified containers before disposal, separate containers that may be needed for disposal of toxic or hazardous wastes		10	2	8
	PC12. apply ergonomic principles wherever required		10	2	8
			Total	100	20

SECTION 2

EVIDENCE OF NEED

What evidence is there that the qualification is needed?

Please refer to the attached list of job roles and occupations identified in construction sector. These job roles have been derived through extensive industry interactions facilitated from 10 workshops and various site visits conducted and interaction with 500+ representatives from different construction sector organizations all over the country.

What is the estimated uptake of this qualification and what is the basis of this estimate?

As per survey the incremental Manpower Gap between 2008 and 2022 found out to be 459000 under Scaffolding Occupation

What steps were taken to ensure that the qualification(s) does/do not duplicate already existing or planned qualifications in the NSQF?

QPs for Job Roles of various related SSC's were studied to ensure that there is no duplicity.

What arrangements are in place to monitor and review the qualification(s)? What data will be used and at what point will the qualification(s) be revised or updated?

Standards department of CSDCI will do periodic review and monitor the industry feedbacks, Training Partners feedback on the qualification and will incorporate them appropriately at the designated revision time.

The revision of this qualification is scheduled after 2 years i.e. 23/05/2017

Please attach any documents giving further information about any of the topics above.

Give details of the document(s) here:

1. List of job roles

SECTION 3

SUMMARY EVIDENCE OF LEVEL

Summary of Direct Evidence:

Justify the NSQF level allocated to the QP by building upon the five descriptors of NSQF. Explain the reasons for allocating the level to the QP.

Generic NOS is/are linked to the overall authority attached to the job role.

Assistant Scaffolder Conventional - QP CON/Q0313

Process required	Professional Knowledge	Professional Skills	Core Skills	Responsibility	Level
<p>The job holder perform task which are repetitive such as use of tools relevant to scaffolding trade, assist in erection and dismantling of conventional scaffold using bamboo, ballies and pipe and coupler.</p> <p>These functions require little application of understanding and more practice.</p>	<p>Job holder is expected to apply basic knowledge of tools, equipments and materials <u>and their application</u> for carrying out <u>erection and dismantling of conventional scaffolding using bamboo, ballies, pipes & coupler at a construction site</u>. The job holder should have an understanding of context of scaffolding works and the expected quality outcome.</p>	<p>The job holder handles and uses hand tools and assist in erection and dismantling of conventional scaffold using bamboo, ballies, pipes and coupler utilizing available materials and components of scaffold under close supervision as per expected quality outcome. The job holder should adhere to safety norms of the organisation while carrying out these works.</p> <p>The above functions requires limited service skills in a limited context.</p>	<p>The job holder applies basic knowledge of reading <u>to read hand sketches</u>, <u>safety signages</u>, <u>safety tags and also apply</u>-basic arithmetic <u>to arrive at rough quantity estimate of scaffold material required</u>. <u>Also needs</u> comprehend instructions orally and effectively and <u>transmit</u> them as per requirement through both written and oral means.</p> <p>The job holder adheres to environmental and safety guidelines and carries out proper housekeeping, storing and stacking practices while performing various tasks.</p>	<p>The Job holder is not directly responsible for the outcomes of the works as the works are carried out under instruction and close supervision of trade senior. <u>The job holder is not responsible for the completion of activity or quality of outcome as main work is to assist in erection and dismantling of scaffolding erection</u></p>	2
Level 2	Level 2	Level 2	Level 2	Level 2	Level 2

OTHER EVIDENCE OF LEVEL [This need only be filled in where evidence other than primary outcomes was used to allocate a level] **(Optional)**

Summary of other evidence (if used): **Not applicable.**

SECTION 4

EVIDENCE OF RECOGNITION OR PROGRESSION

What steps have been taken in the design of this or other qualifications to ensure that there is a clear path to other qualifications in this sector?

Please refer to attached career path as per annexure 1 which clearly defines the clear career path.

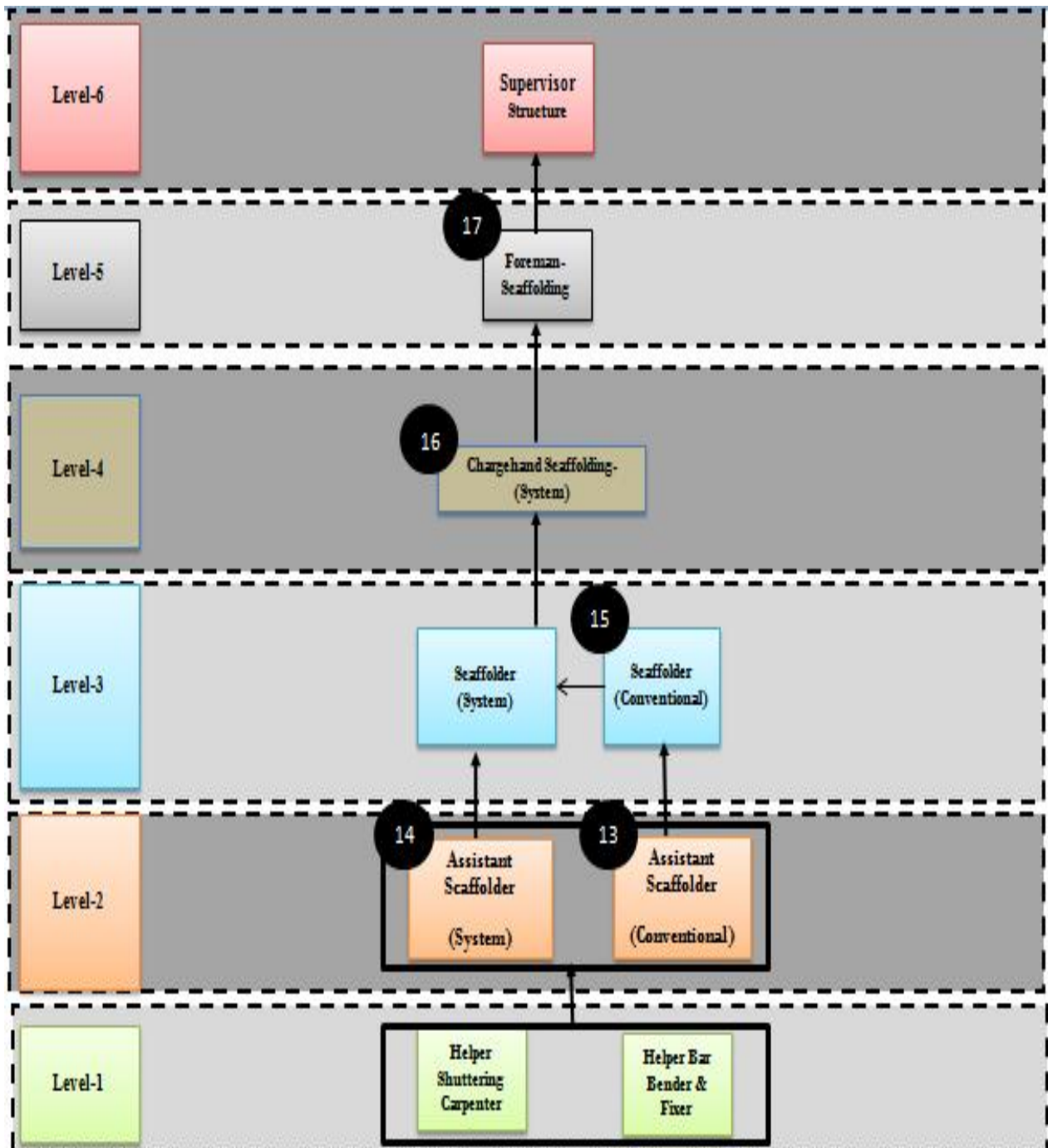
Please attach any documents giving further information about any of the topics above.

Give details of the document(s) here:

1. Annexure 1
 - Overall Career map
 - Career map of Scaffolding Occupation
2. QP CON/Q0313- Annexure 2

Annexure 1

Career Map



Annexure 2- QP CON/Q0313